

15 CONTROL-CHART EXAMPLES

Using the Control-Chart Examples

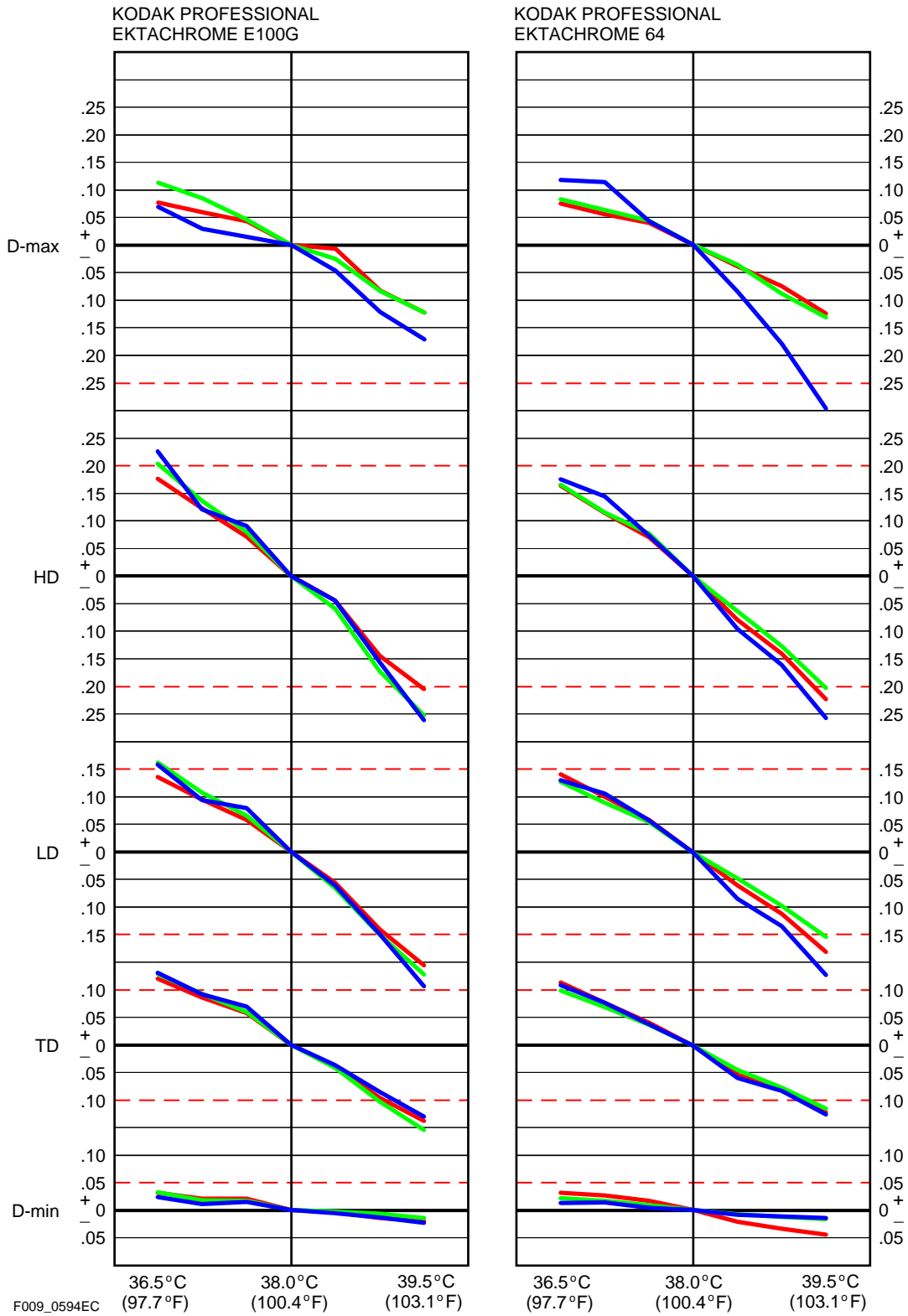
The color charts in this section are examples of the effects of process variations on the control plots. Use these charts with the information in section 1, "Processing Solutions and Their Effects," and section 14, "Diagnostic Charts," to analyze your process problems. To locate the pattern that most nearly matches your plot, look at the tabs. The patterns on the tabs correspond to the color or speed plots.

Although these control plots are typical, they may not match your plot exactly for a particular condition. Match the predominant trend in your plot with the examples.

Chart	Process Step	Condition	Chart	Process Step	Condition
1	First Developer	Temperature	25	Color Developer	Overreplenished
2	First Developer	Concentration	26	Color Developer	Underreplenished
3	First Developer	Starter	27	Color Developer	Oxidized
4	First Developer	Contaminated with Reversal Bath	28	Color Developer	Sulfite Concentration
5	First Developer	Contaminated with Fixer	29	Prebleach	Dilution
6	First Developer	Contaminated with Color Developer Starter	30	Prebleach	Concentration
7	First Developer	Contaminated with Color Developer	31	Bleach Time	Short
8	First Developer	Agitation	32	Bleach	Aeration
9	First Developer	Overreplenishment	33	Fixer	Time Short
10	First Developer	Underreplenishment	34	First and Color Developers	Overreplenished by 50%
11	First Developer	Iodide Concentration	35	First and Color Developers	Underreplenished by 50%
12	First Developer	Bromide Concentration	36	Color Developer	With Stagnant Tank
13	First Wash	Temperature			
14	Reversal Bath	Mix Ratio			
15	Reversal Bath	Reversal Agent Concentration			
16	Color Developer	pH			
17	Color Developer	Concentration			
18	Color Developer	Starter			
19	Color Developer	Contaminated with Fixer			
20	Color Developer	With First Developer Starter			
21	Color Developer	Contaminated with First Developer			
22	Color Developer	Agitation			
23	Color Developer Ratio	Too Much Part A			
24	Color Developer Ratio	Too Much Part B			

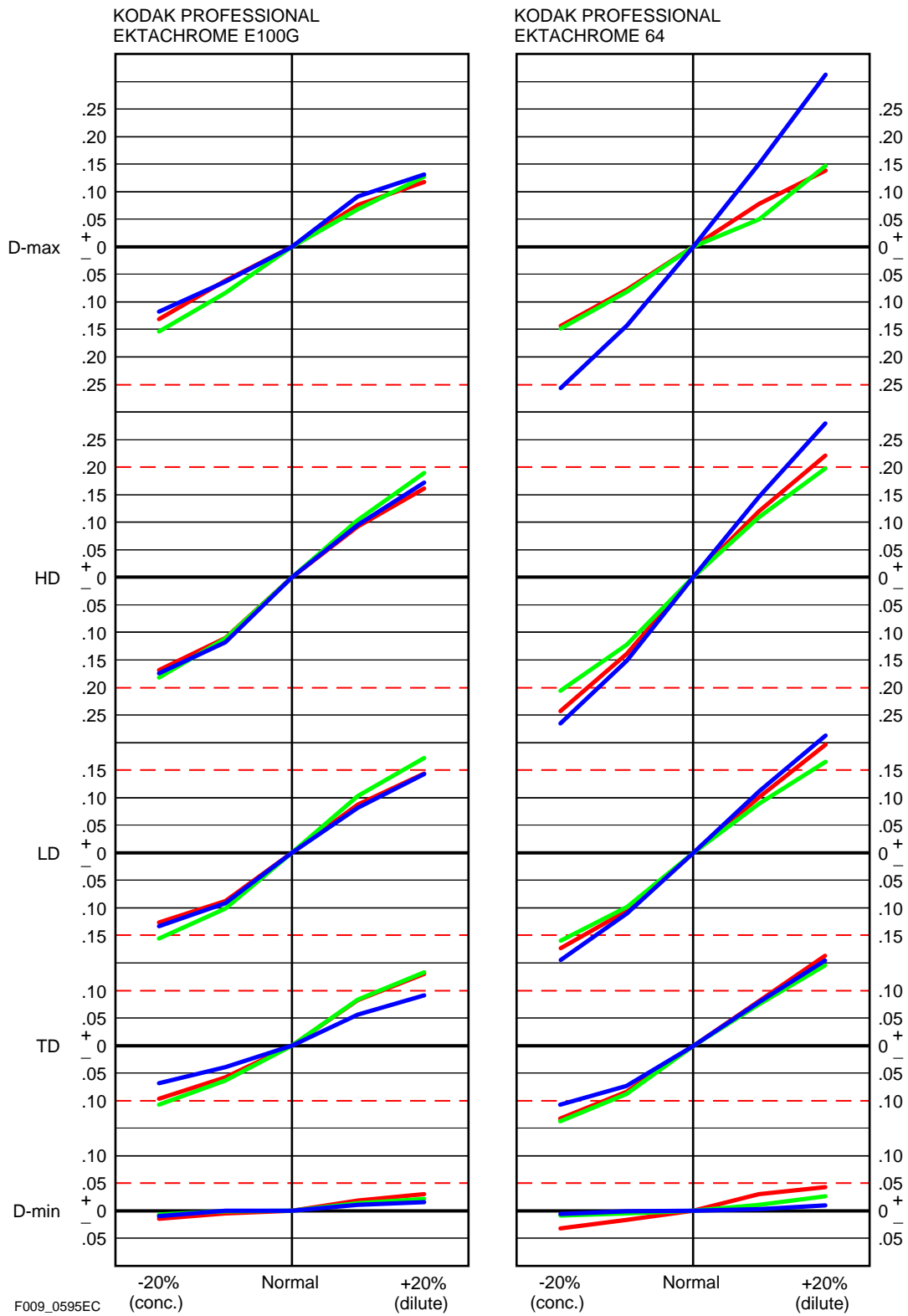
FIRST DEVELOPER—TEMPERATURE

Chart 1



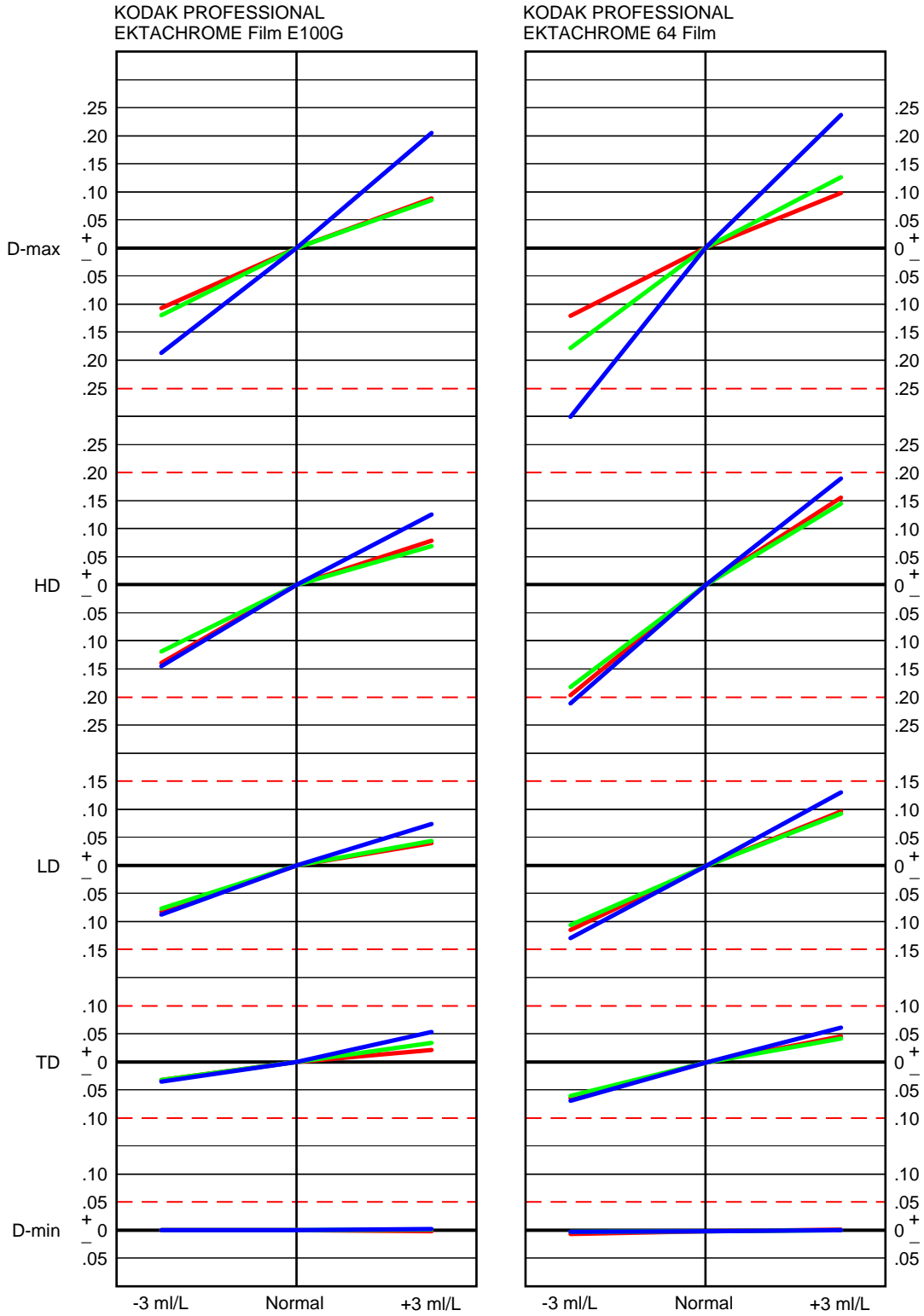
FIRST DEVELOPER—CONCENTRATION

Chart 2



FIRST DEVELOPER—STARTER

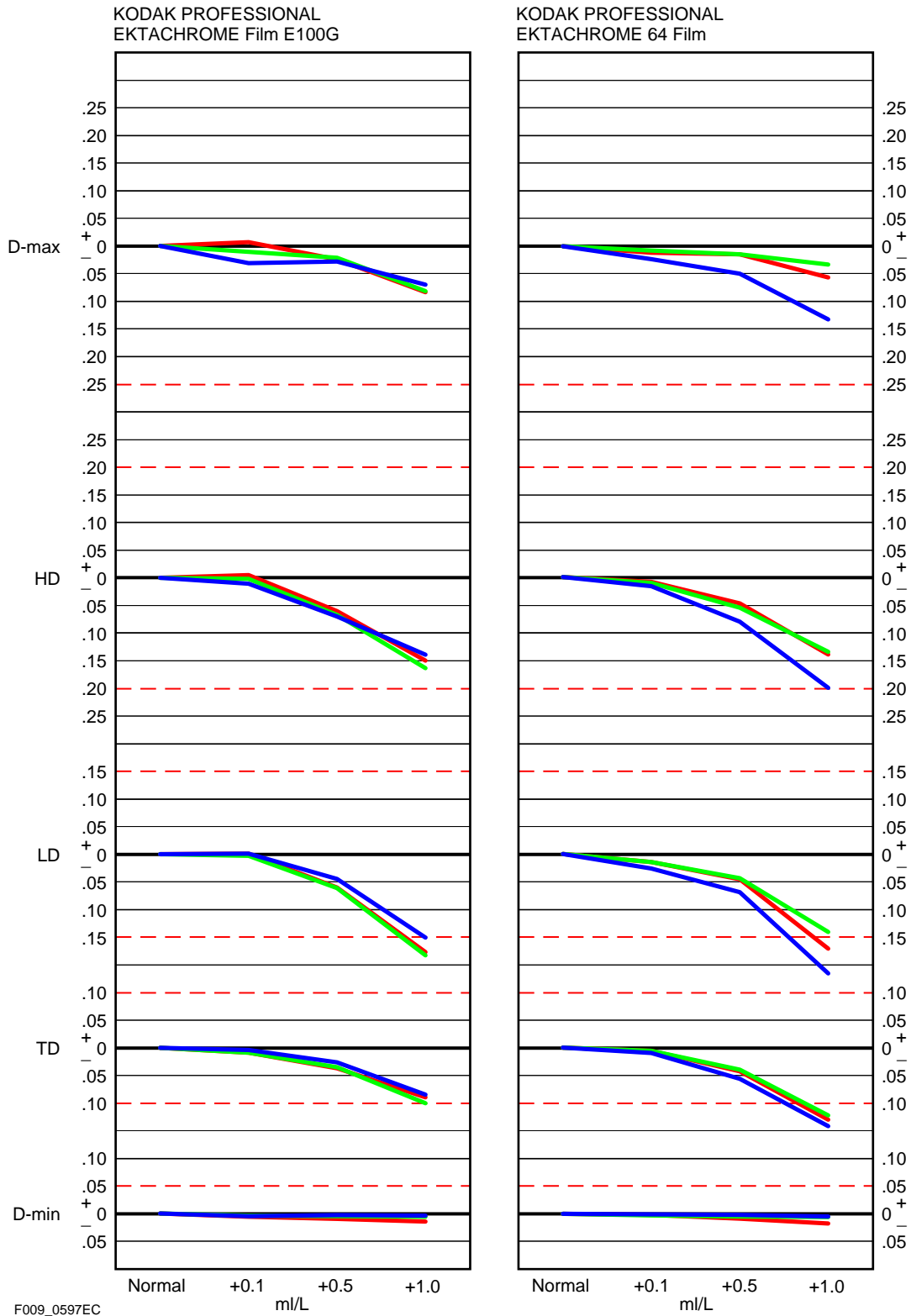
Chart 3



F009_0596EC

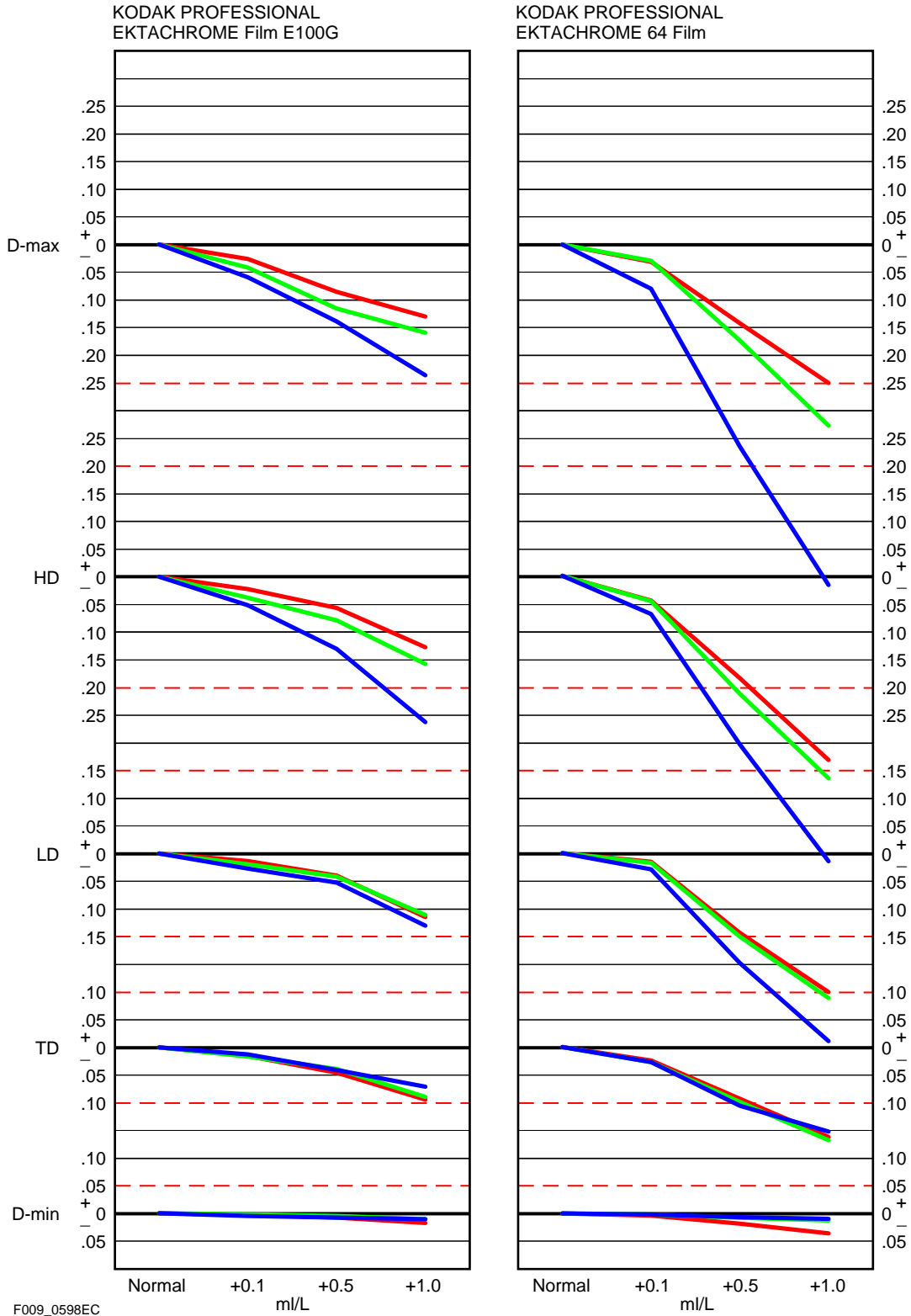
FIRST DEVELOPER—CONTAMINATED WITH REVERSAL BATH

Chart 4



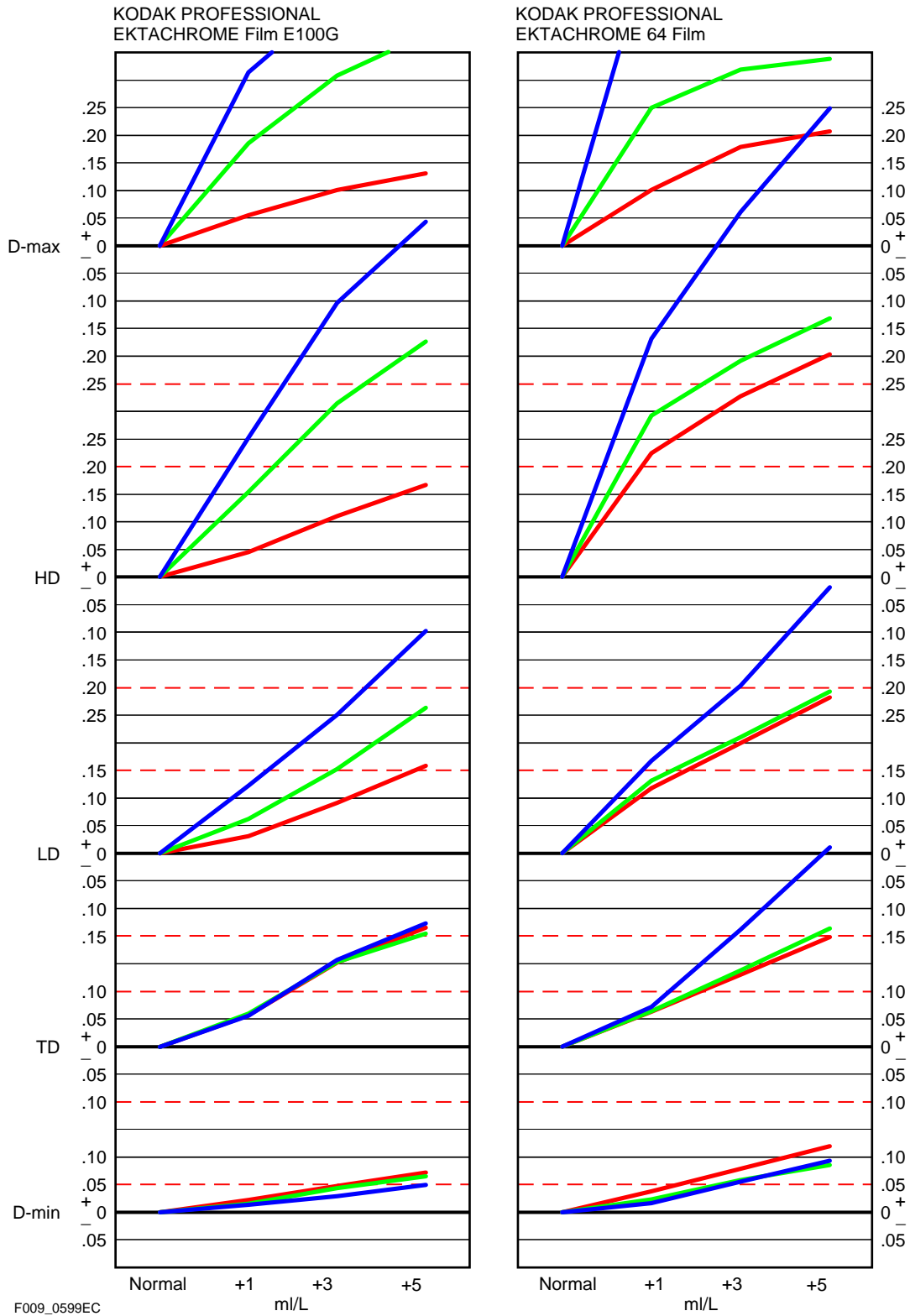
FIRST DEVELOPER—CONTAMINATED WITH FIXER

Chart 5



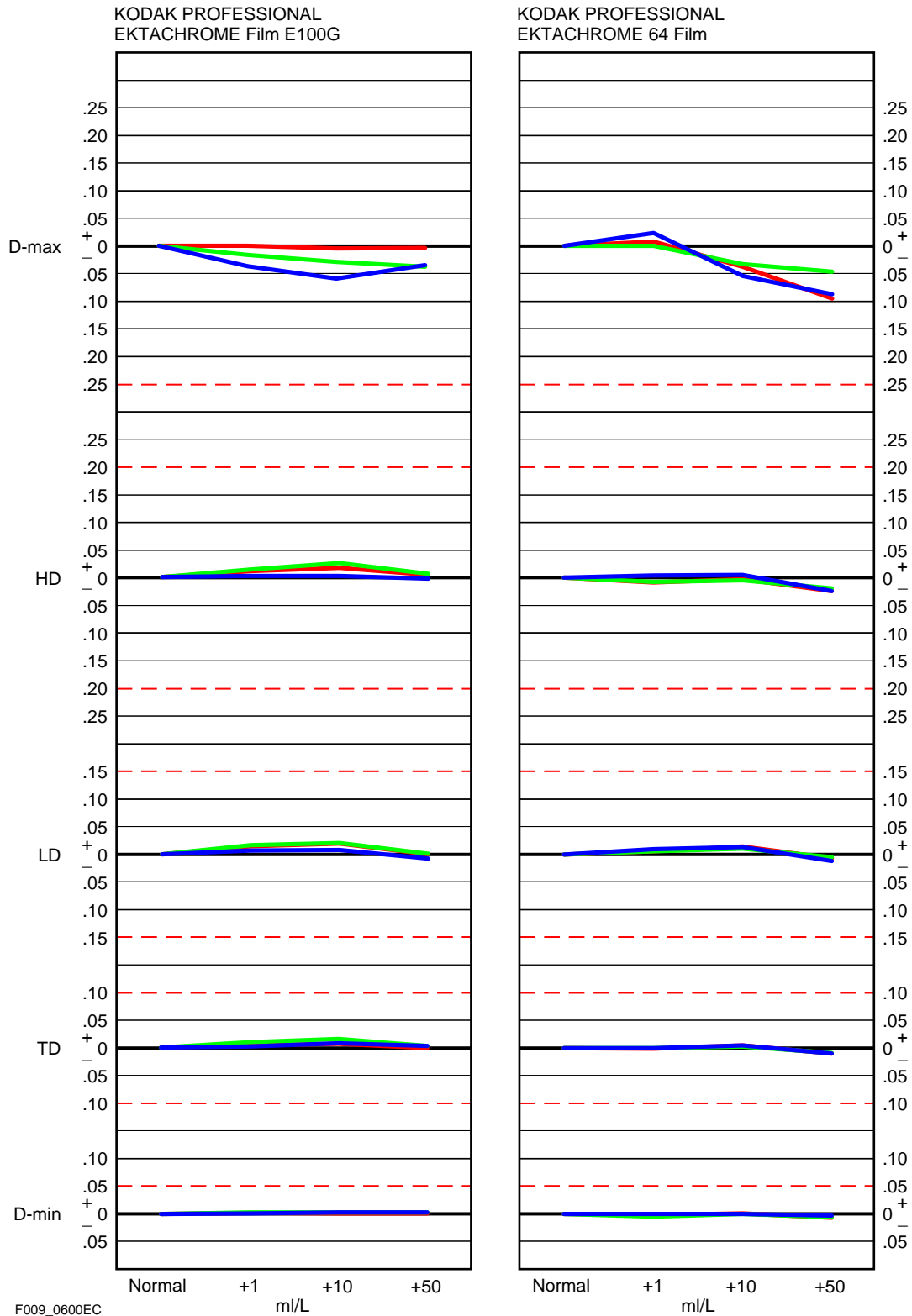
FIRST DEVELOPER—CONTAMINATED WITH COLOR DEVELOPER STARTER

Chart 6



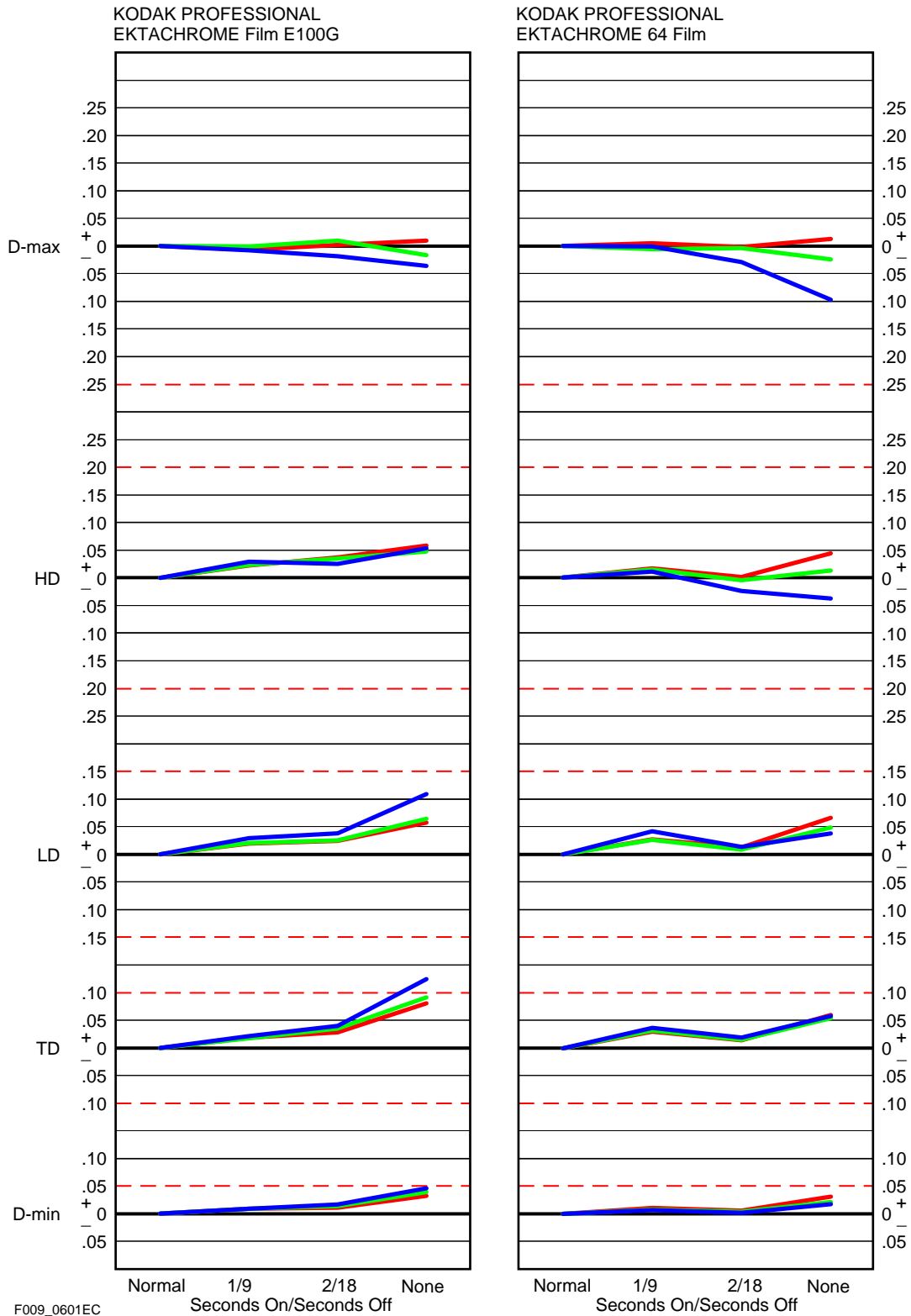
FIRST DEVELOPER—CONTAMINATED WITH COLOR DEVELOPER

Chart 7



FIRST DEVELOPER—AGITATION

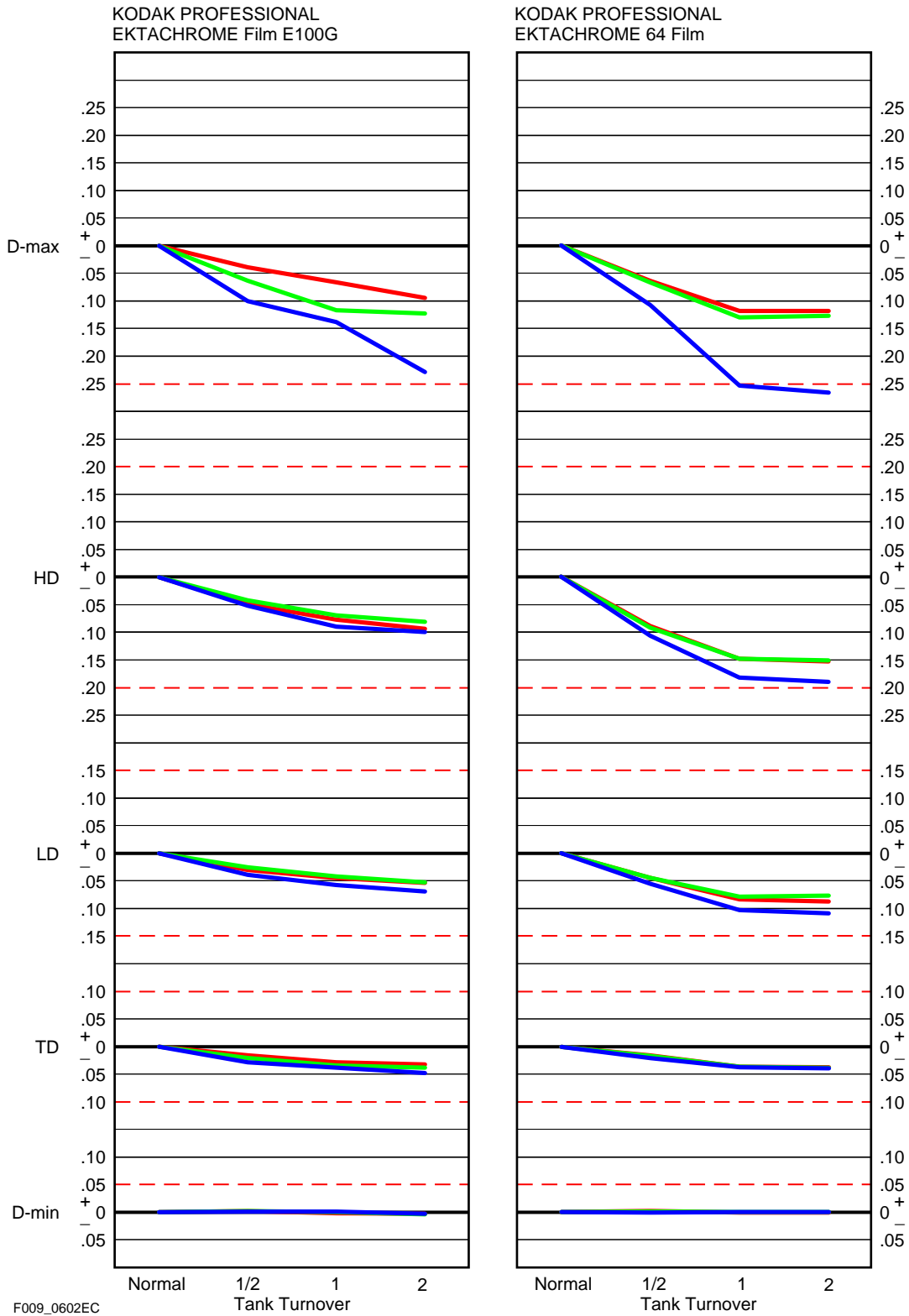
Chart 8



F009_0601EC

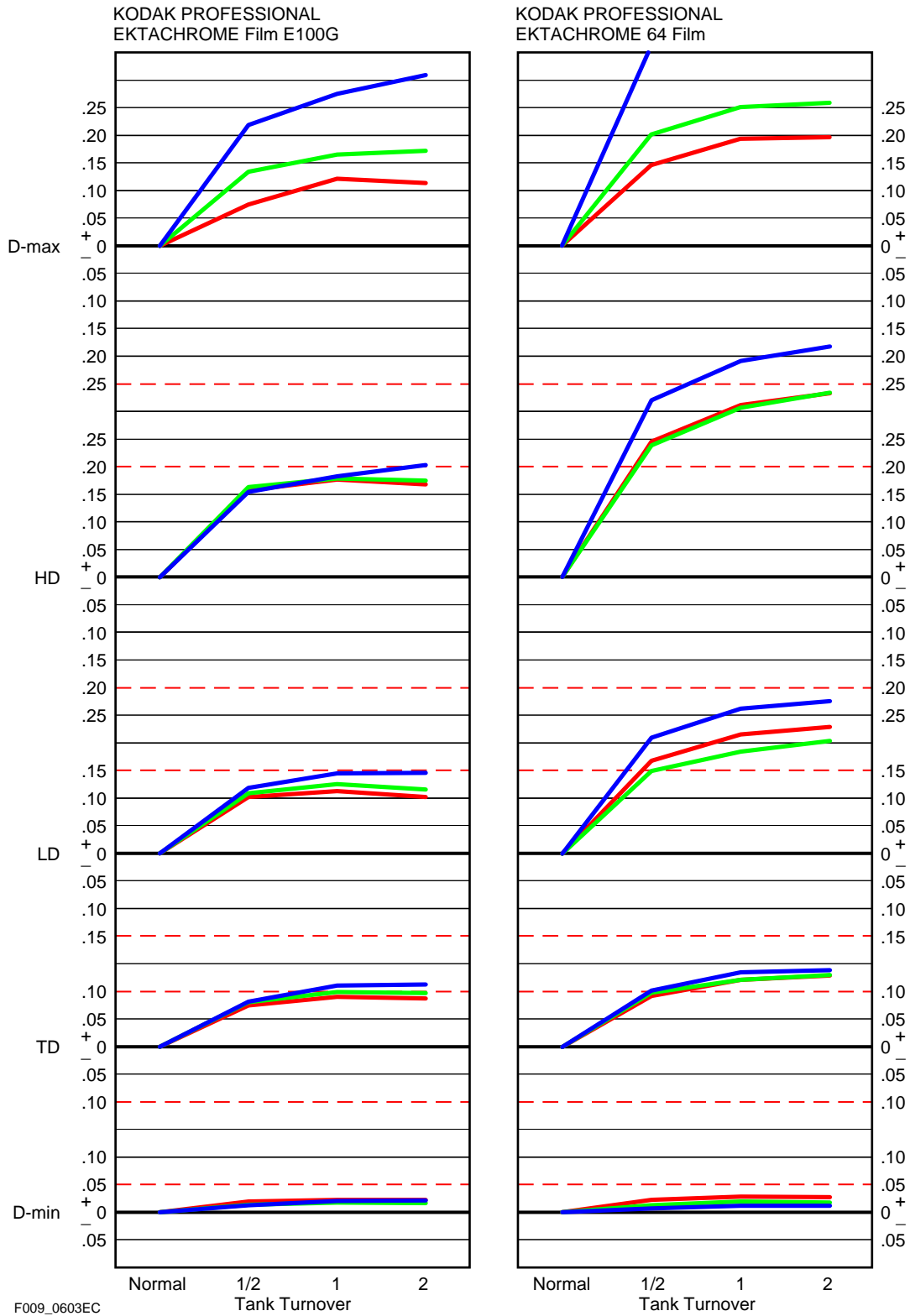
FIRST DEVELOPER—OVERREPLENISHMENT BY 2X OR (400 mL/sq ft)

Chart 9



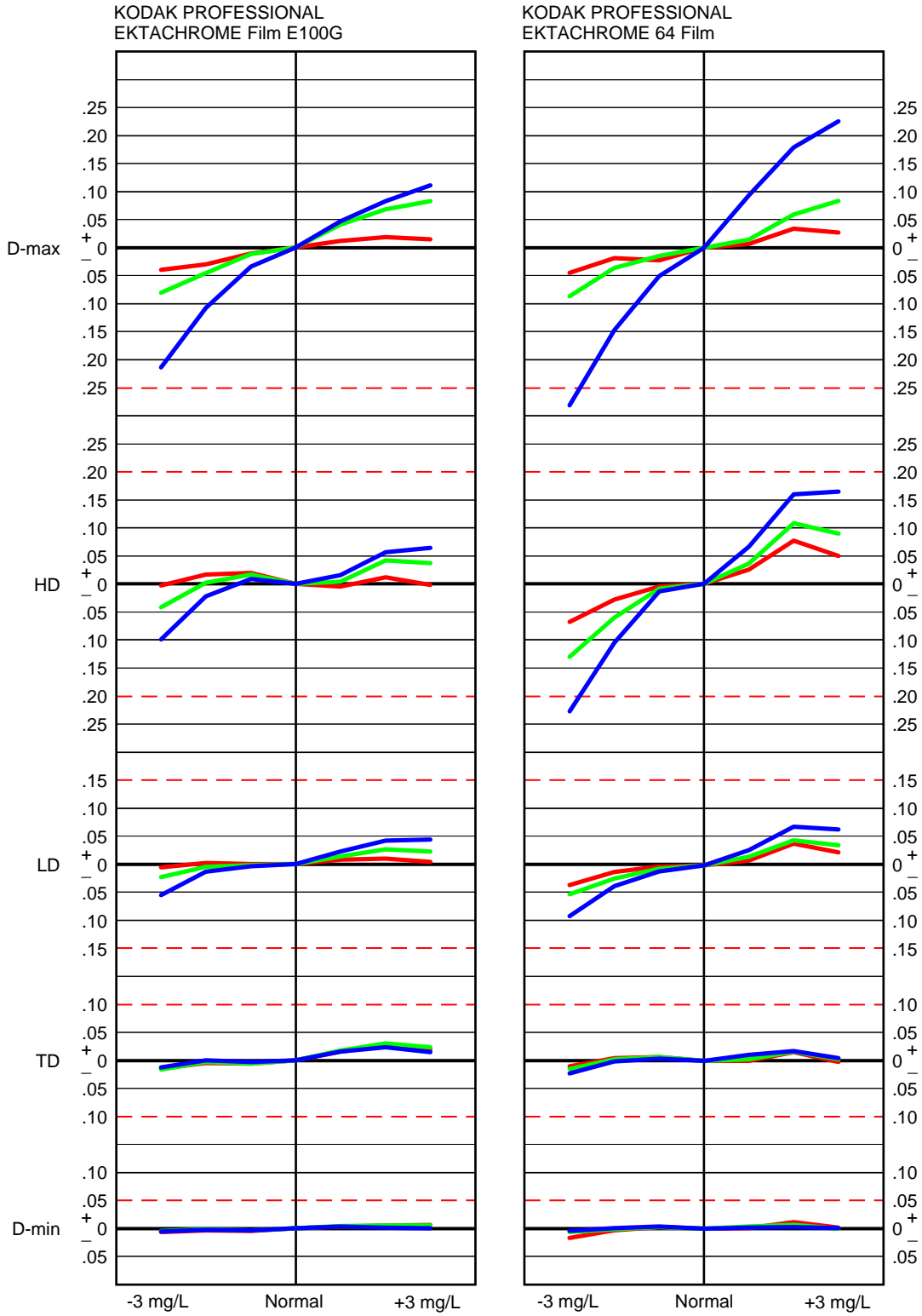
FIRST DEVELOPER—UNDERREPLENISHMENT (100 mL/sq ft)

Chart 10



FIRST DEVELOPER—IODIDE CONCENTRATION

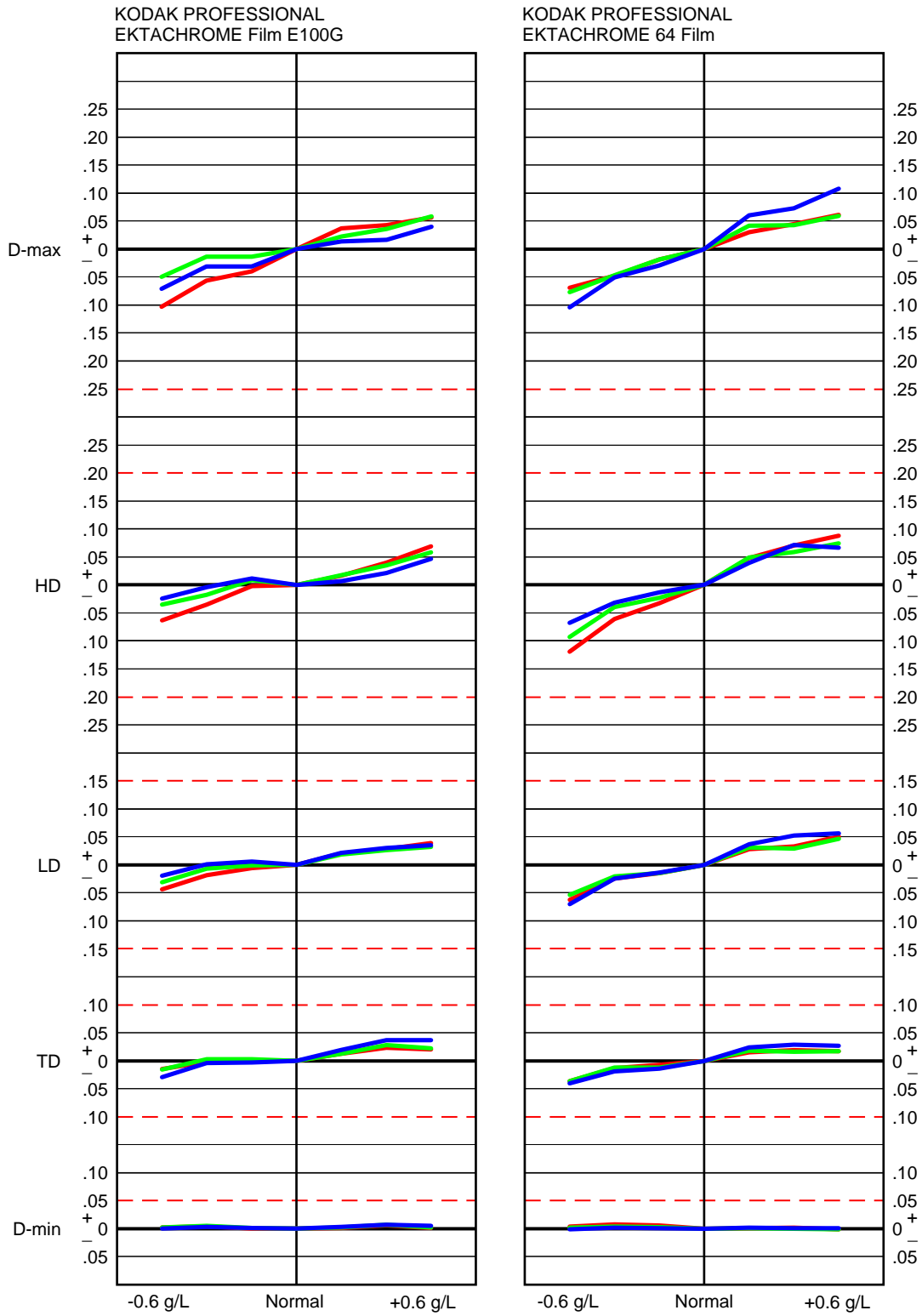
Chart 11



F009_0604EC

FIRST DEVELOPER—BROMIDE CONCENTRATION

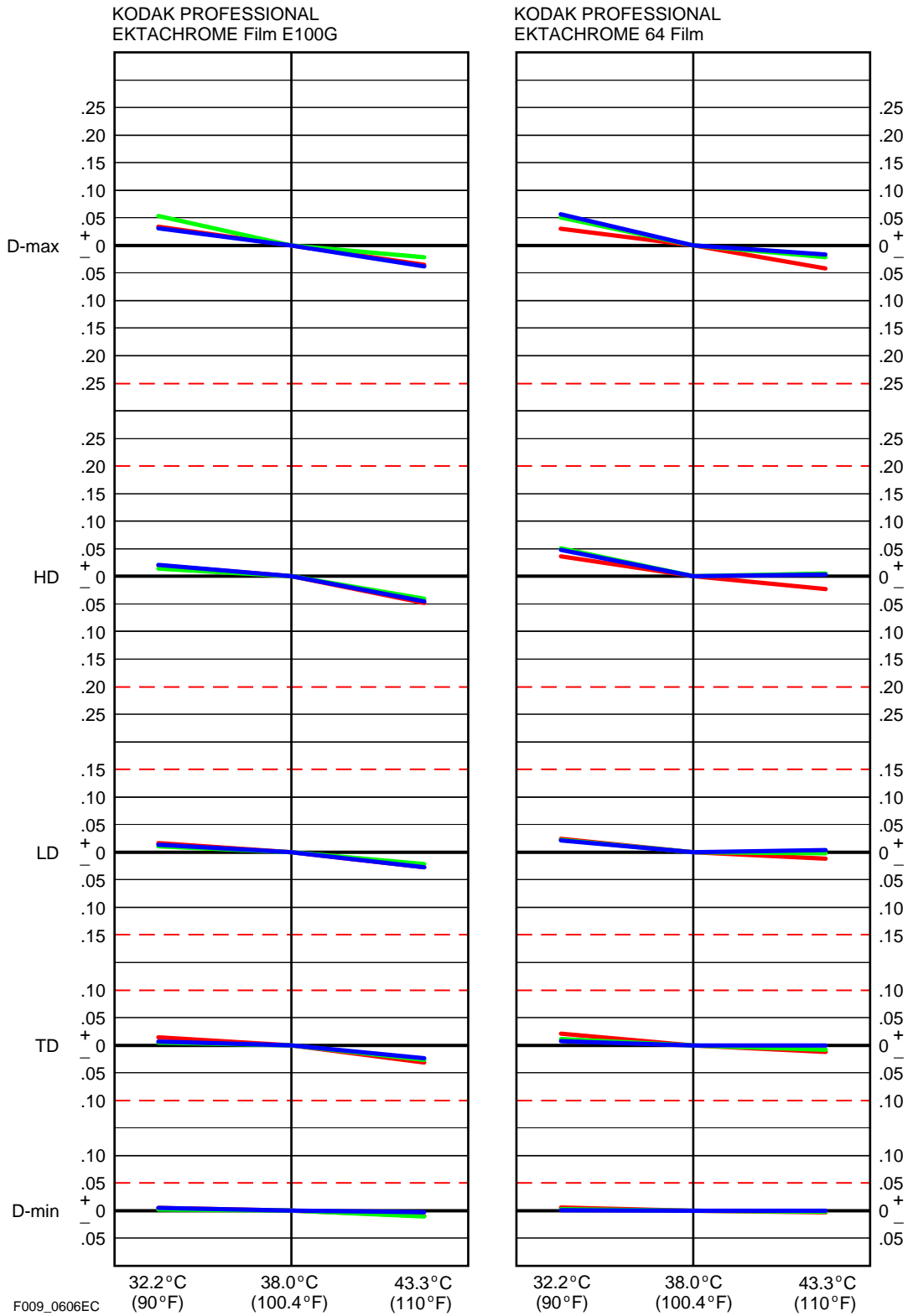
Chart 12



F009_0605EC

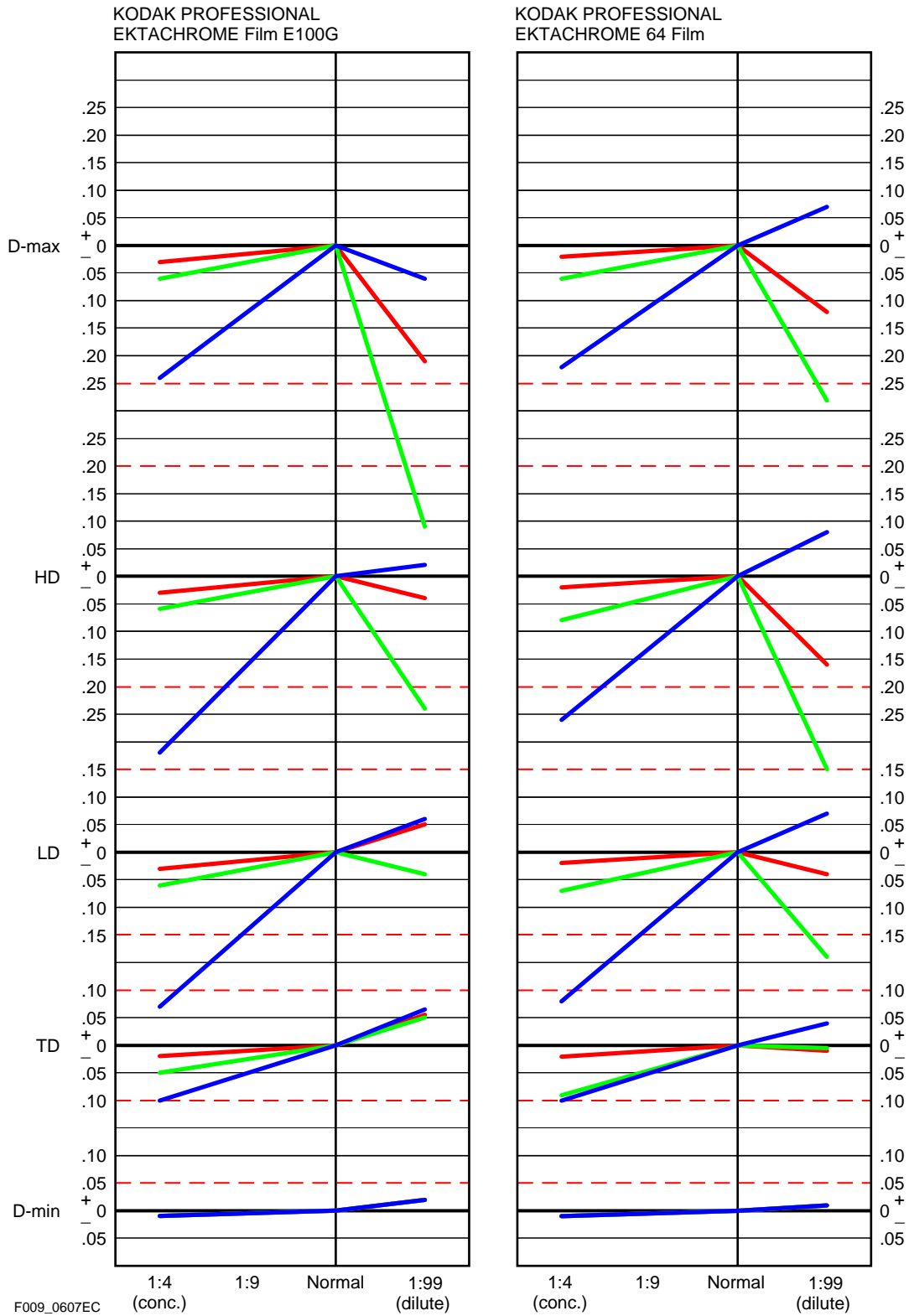
FIRST WASH—TEMPERATURE

Chart 13



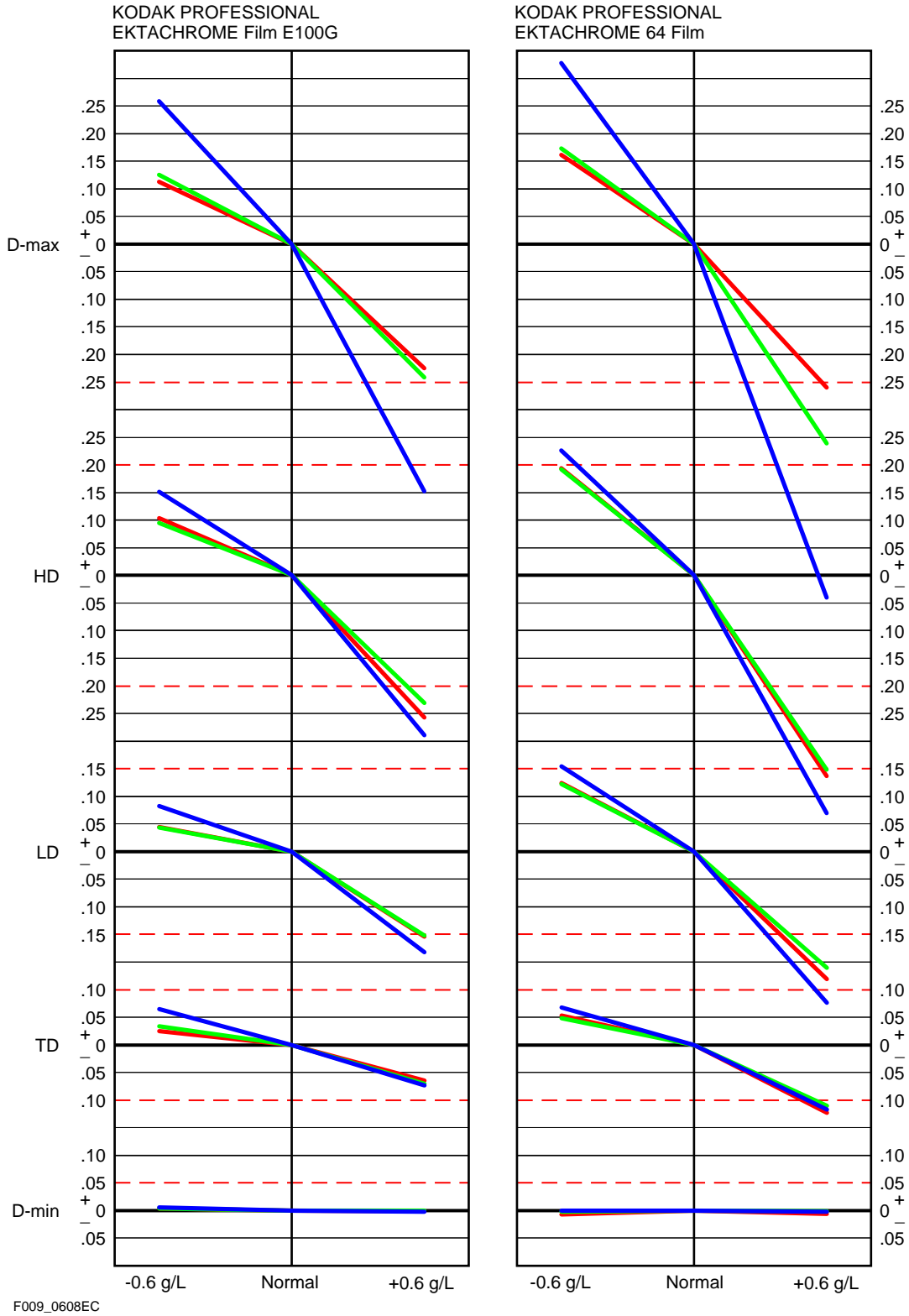
REVERSAL BATH—MIX RATIO

Chart 14



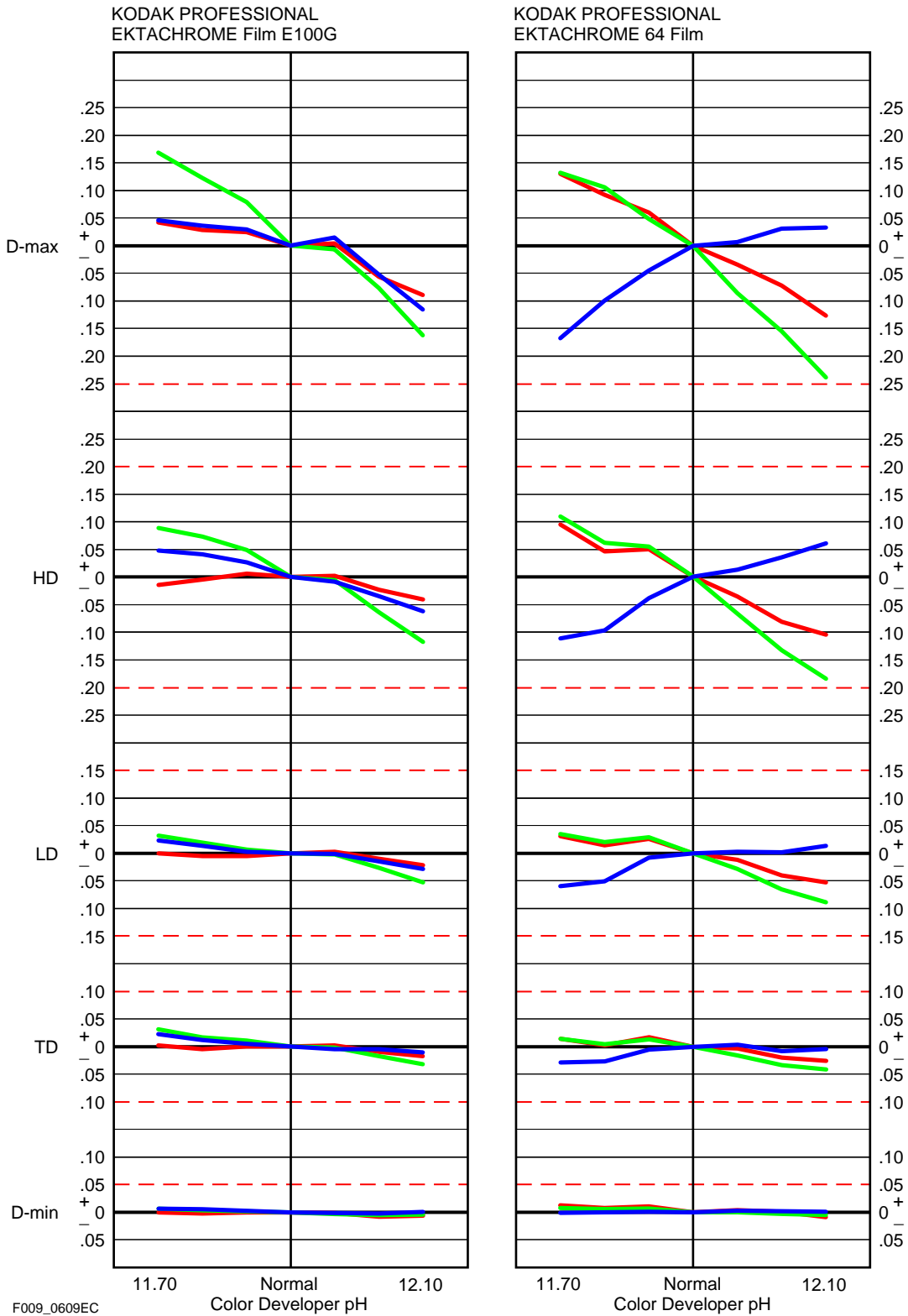
REVERSAL BATH—REVERSAL AGENT CONCENTRATION

Chart 15



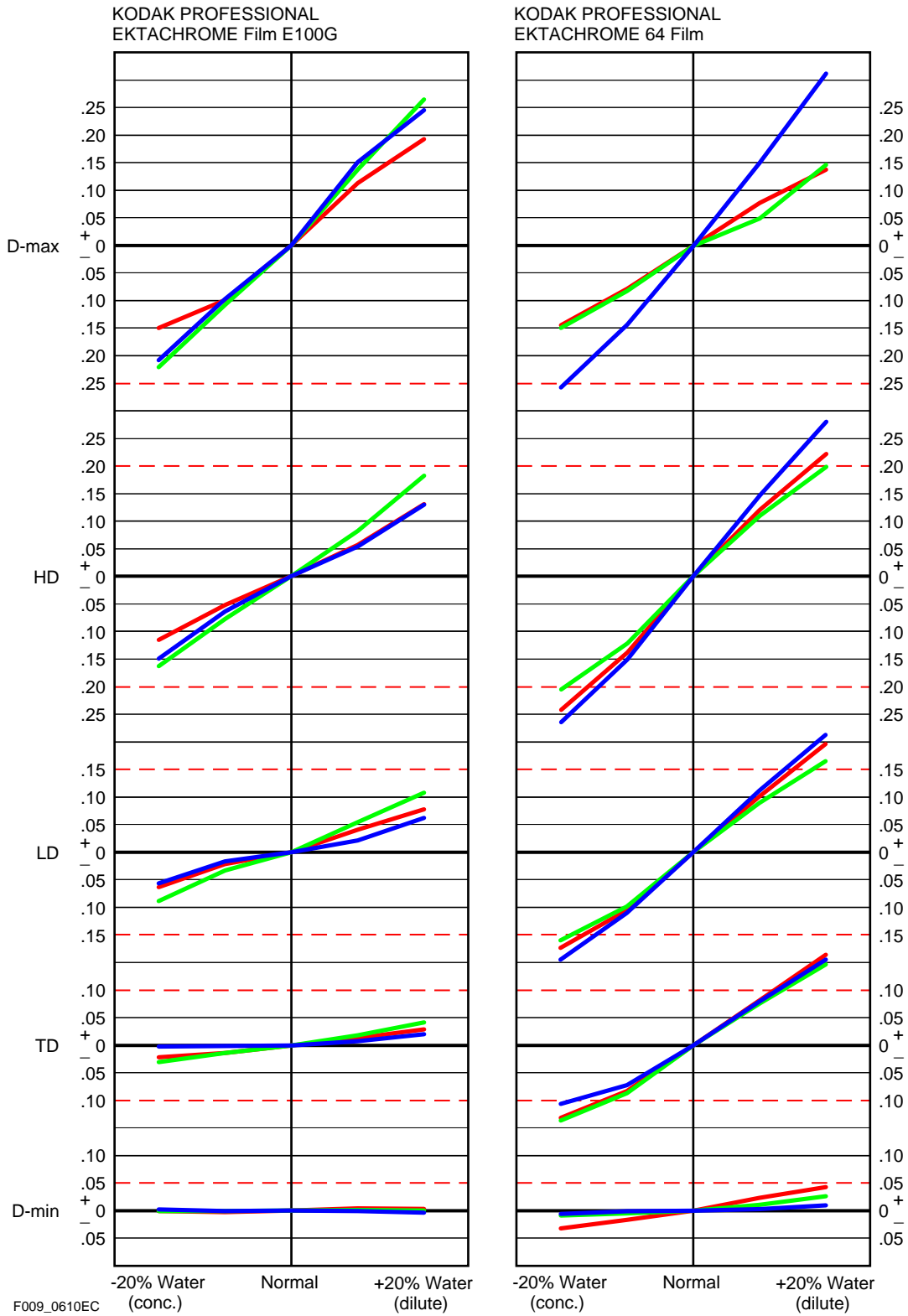
COLOR DEVELOPER—pH

Chart 16



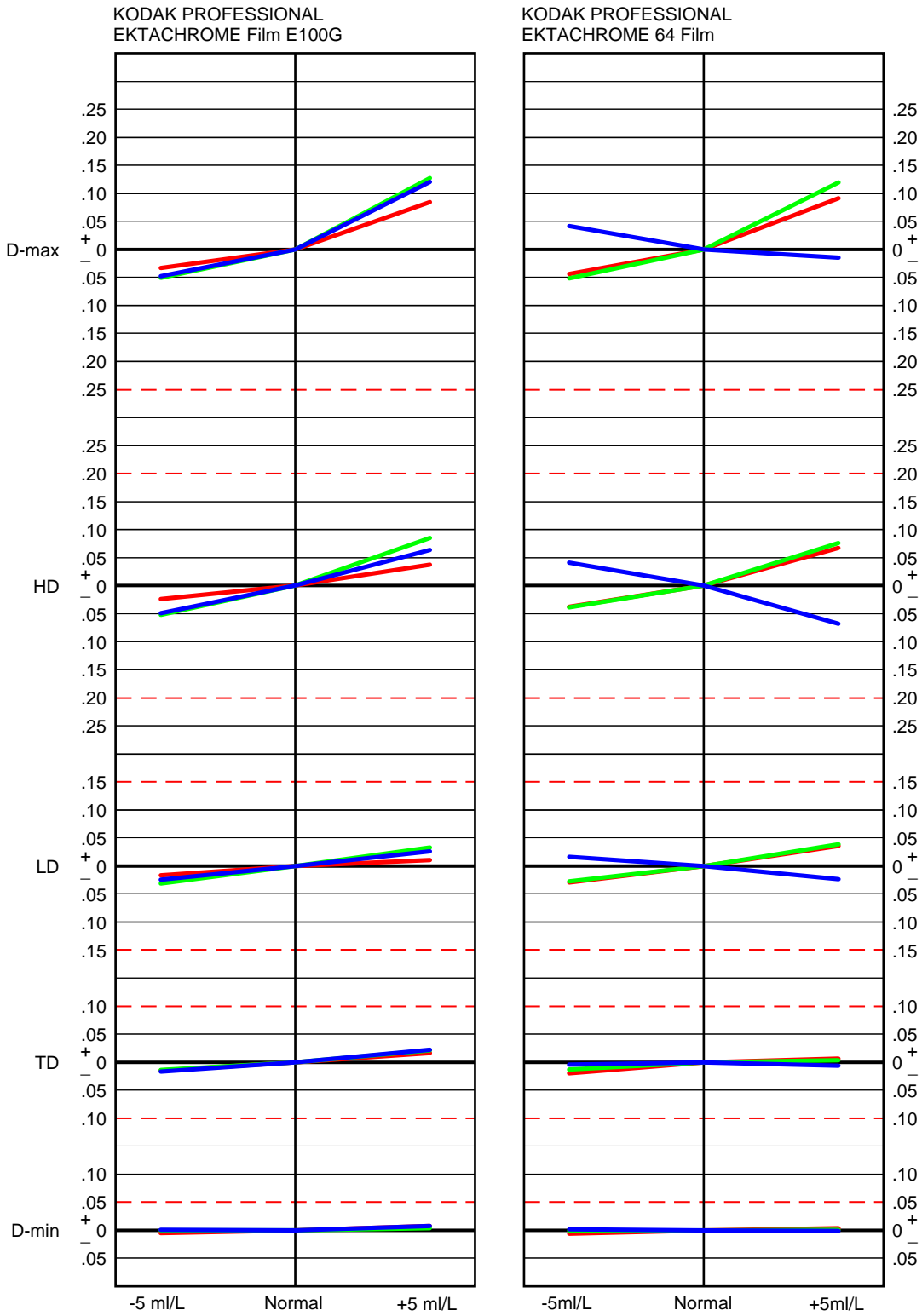
COLOR DEVELOPER—CONCENTRATION

Chart 17



COLOR DEVELOPER—STARTER

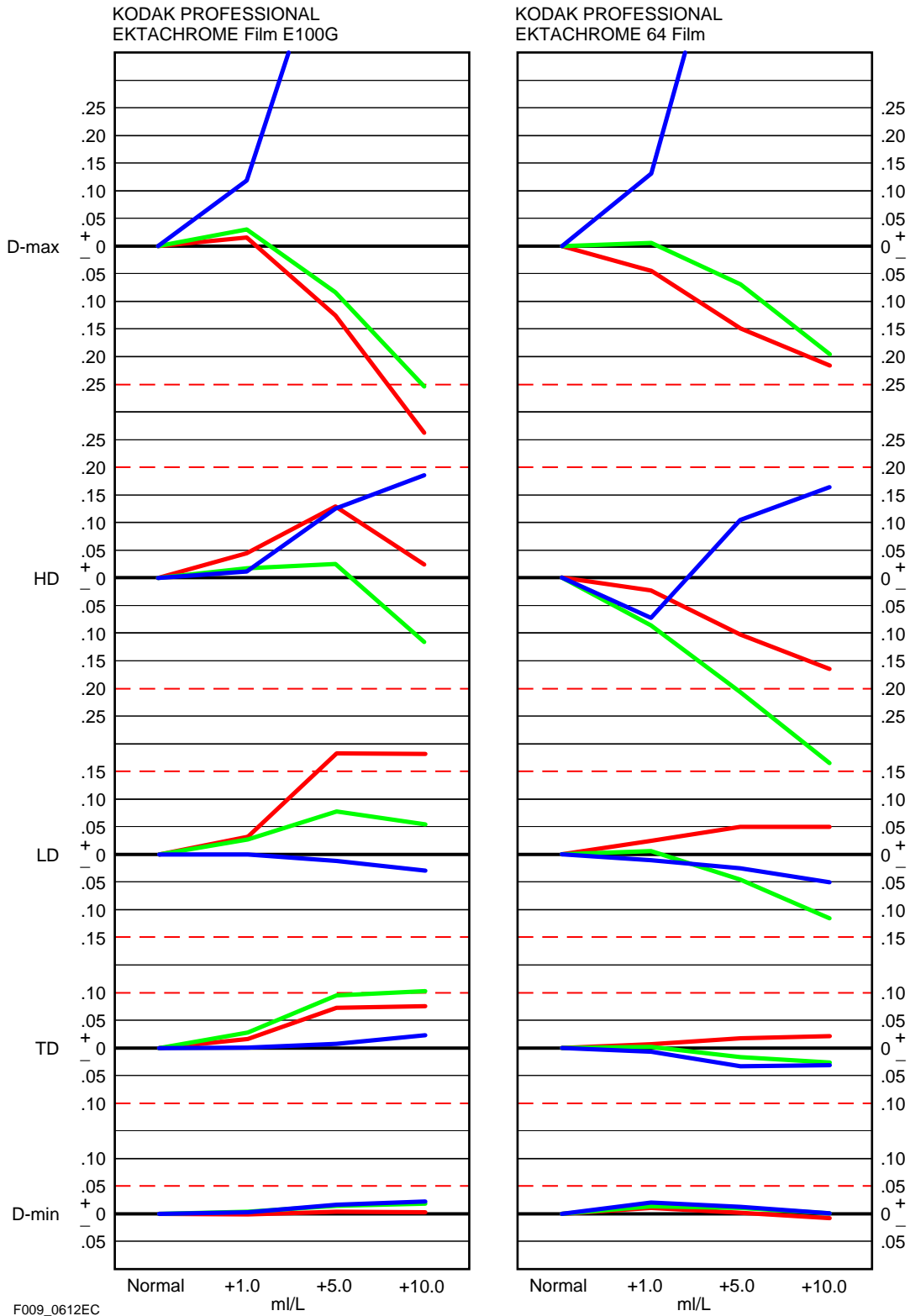
Chart 18



F009_0611EC

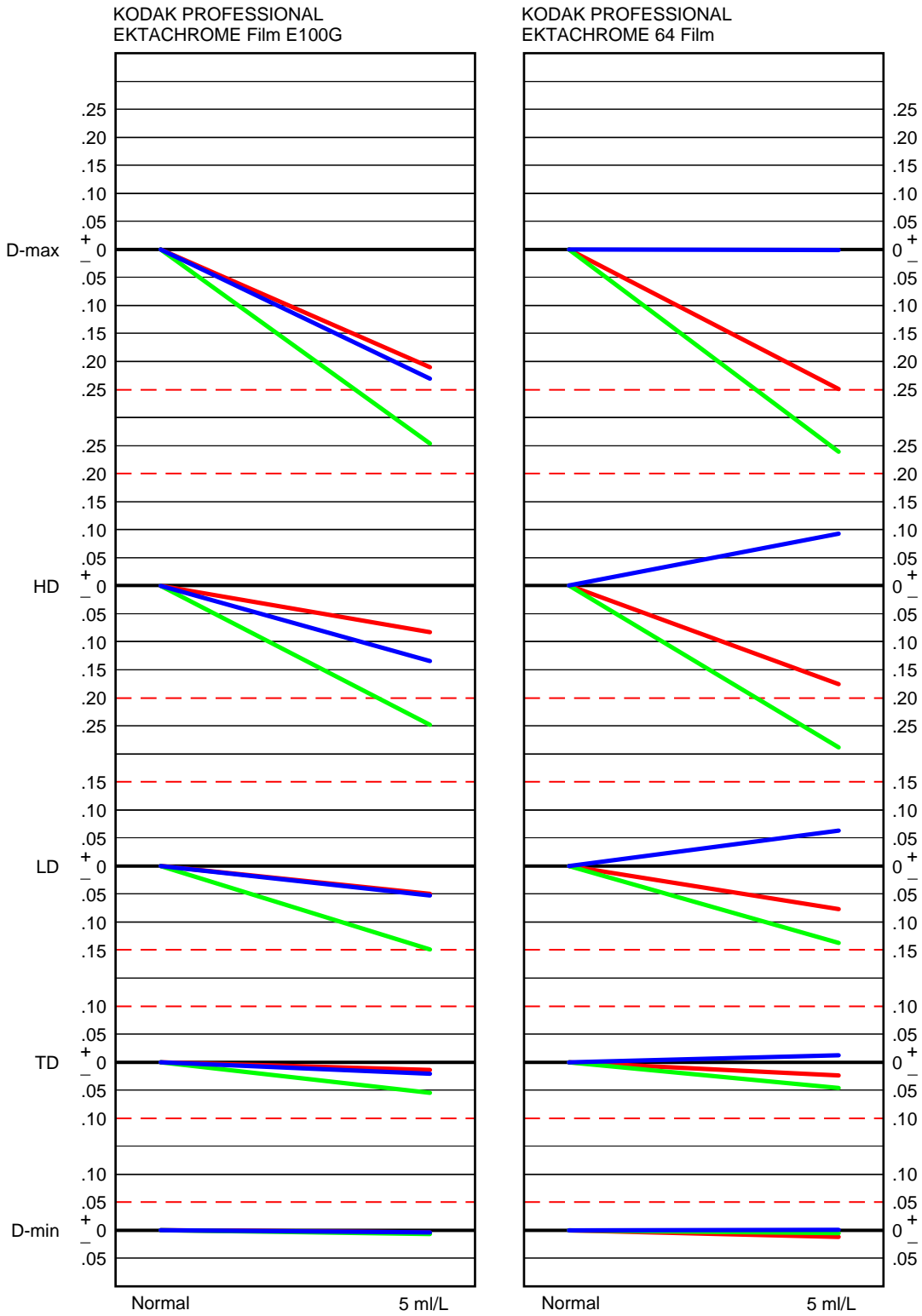
COLOR DEVELOPER—CONTAMINATED WITH FIXER

Chart 19



COLOR DEVELOPER—WITH FIRST DEVELOPER STARTER

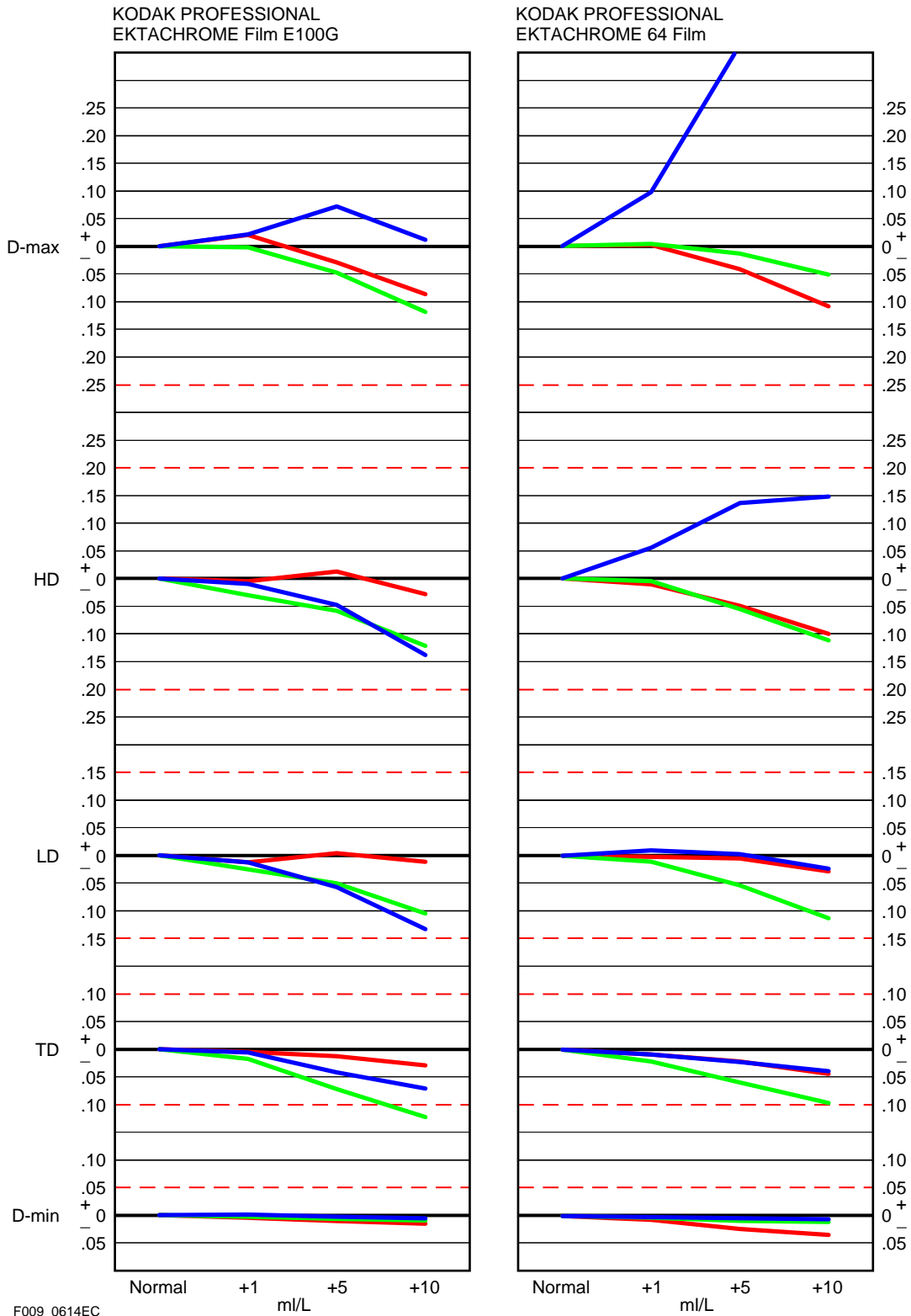
Chart 20



F009_0613EC

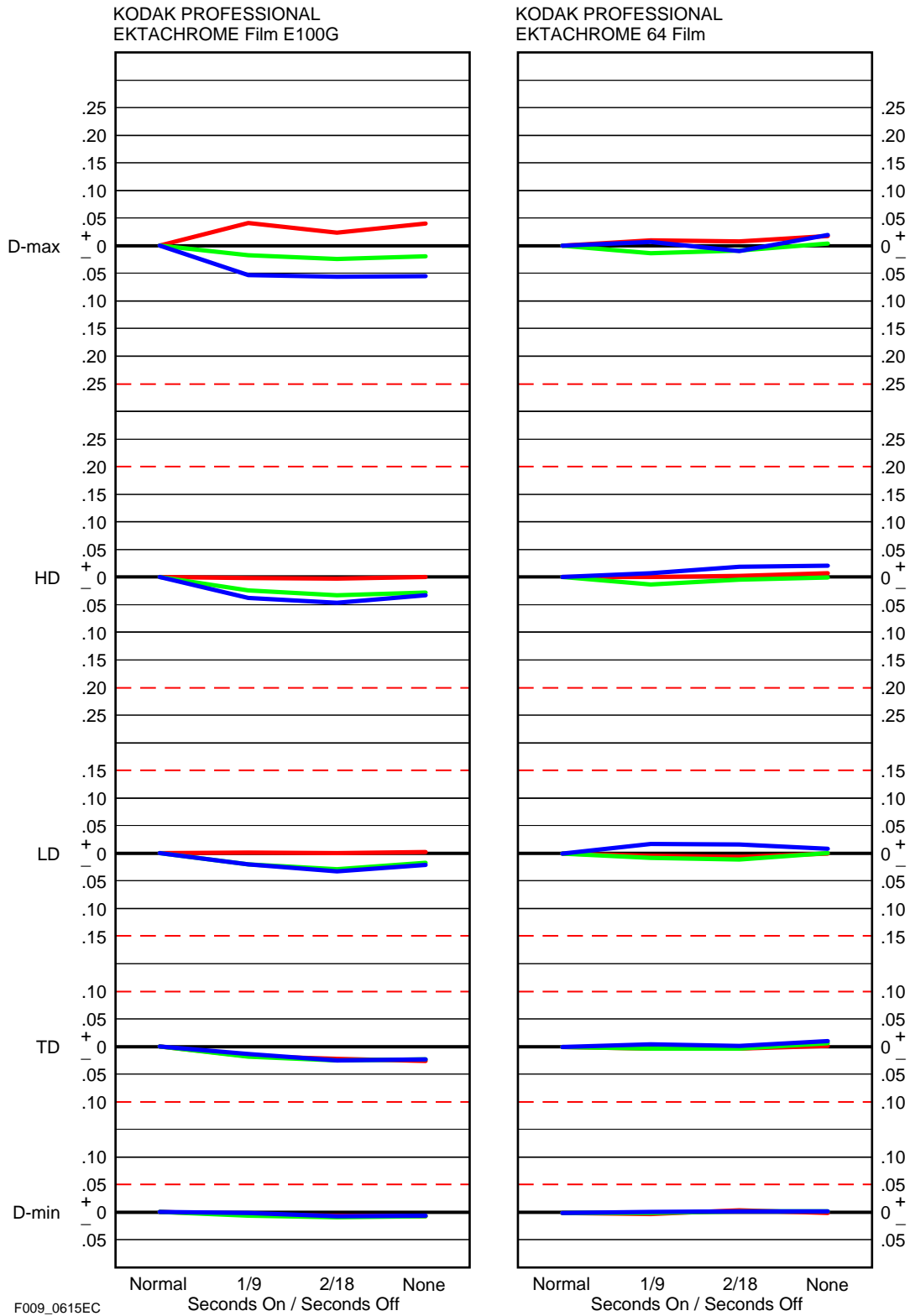
COLOR DEVELOPER—CONTAMINATED WITH FIRST DEVELOPER

Chart 21



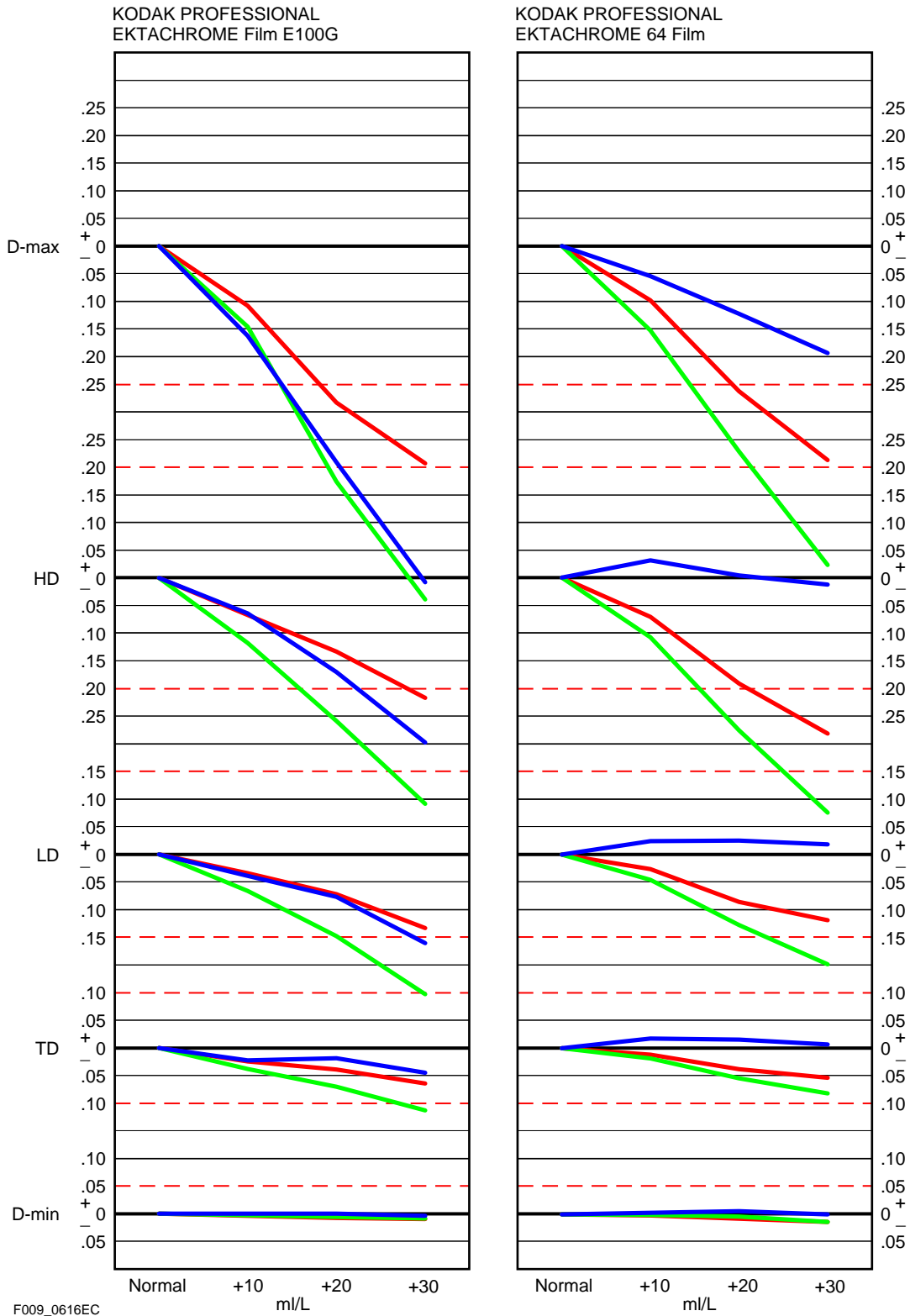
COLOR DEVELOPER—AGITATION

Chart 22



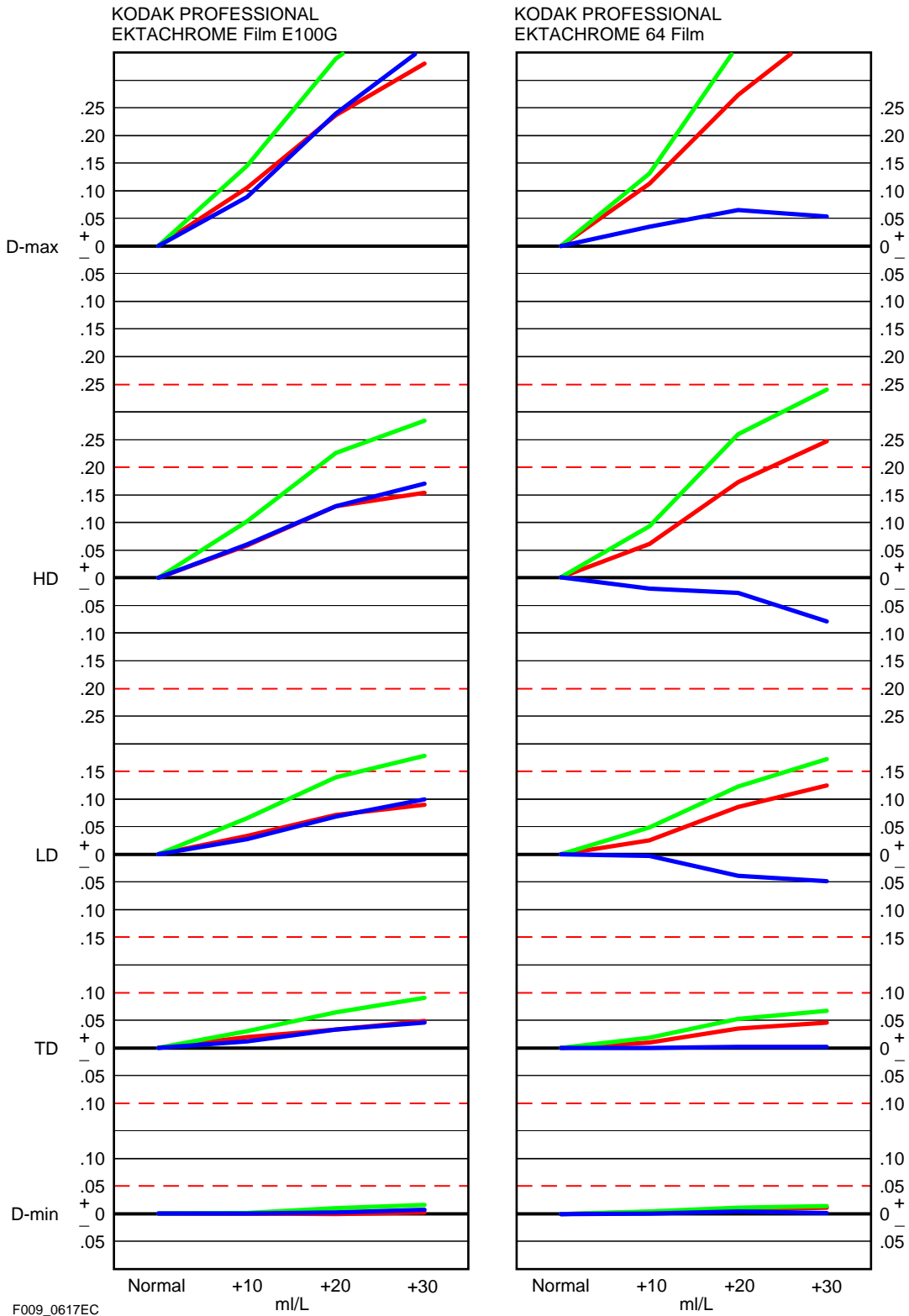
COLOR DEVELOPER RATIO—TOO MUCH PART A

Chart 23



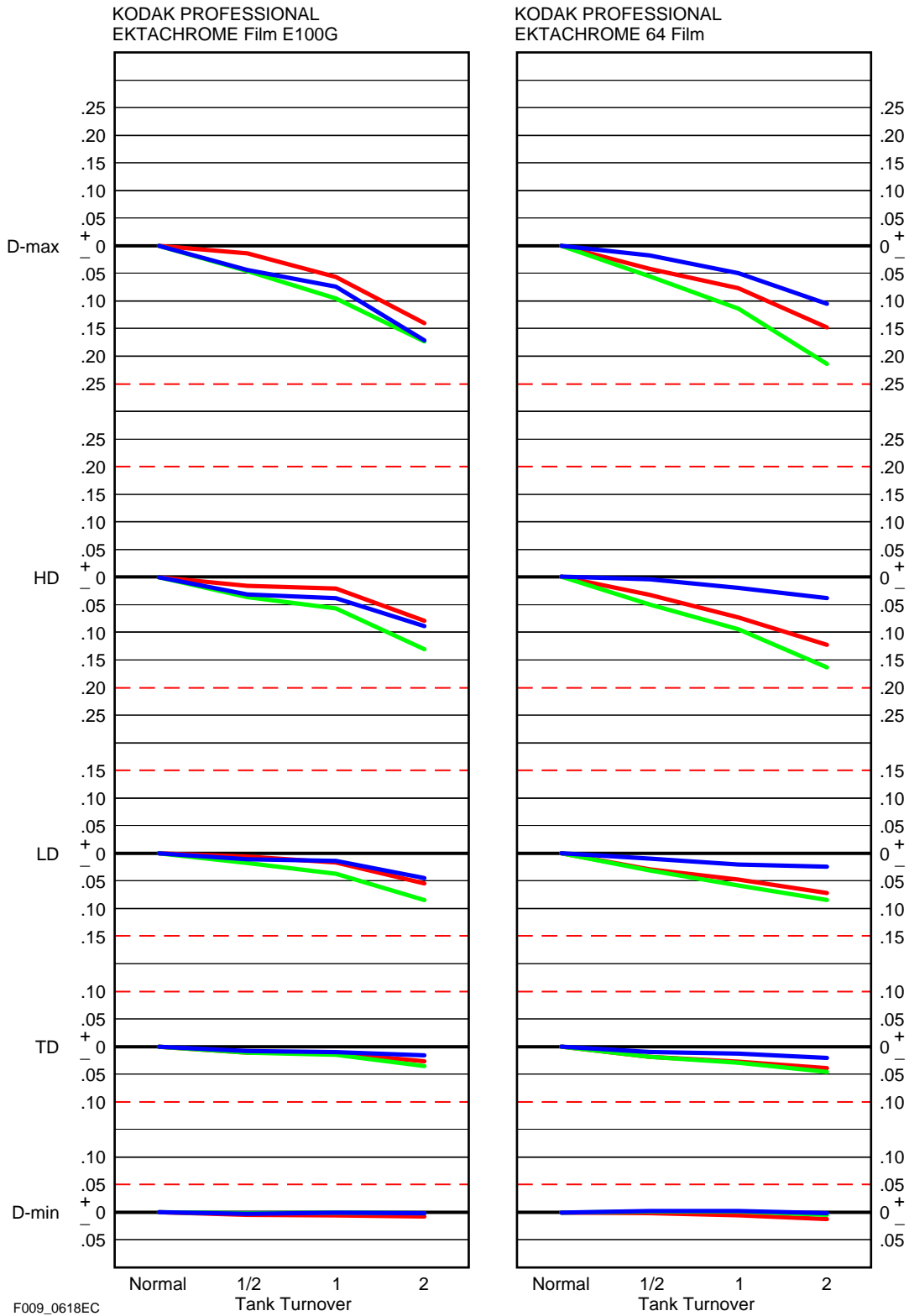
COLOR DEVELOPER RATIO—TOO MUCH PART B

Chart 24



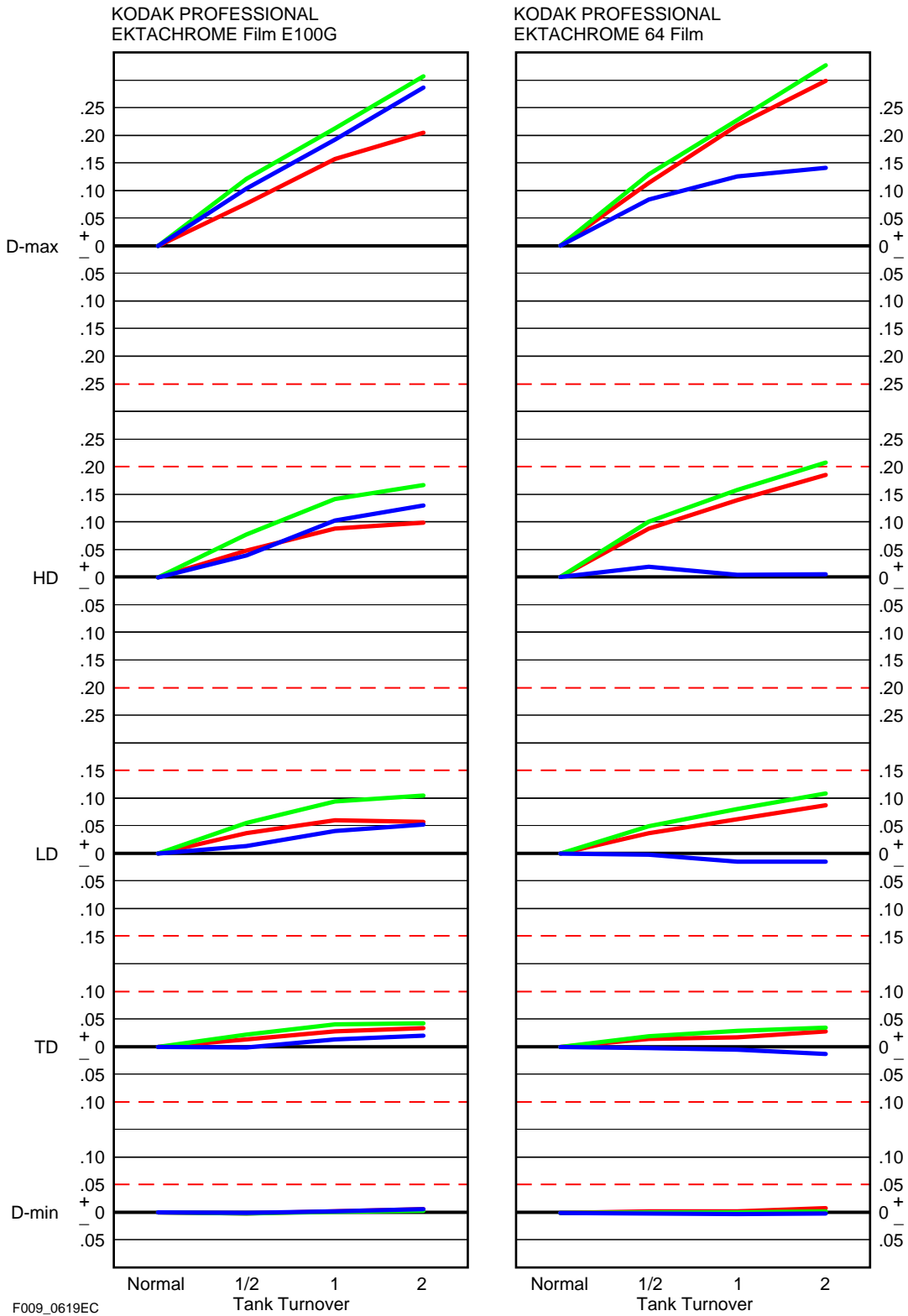
COLOR DEVELOPER—OVERREPLENISHED BY 2X OR (400 mL/sq ft)

Chart 25



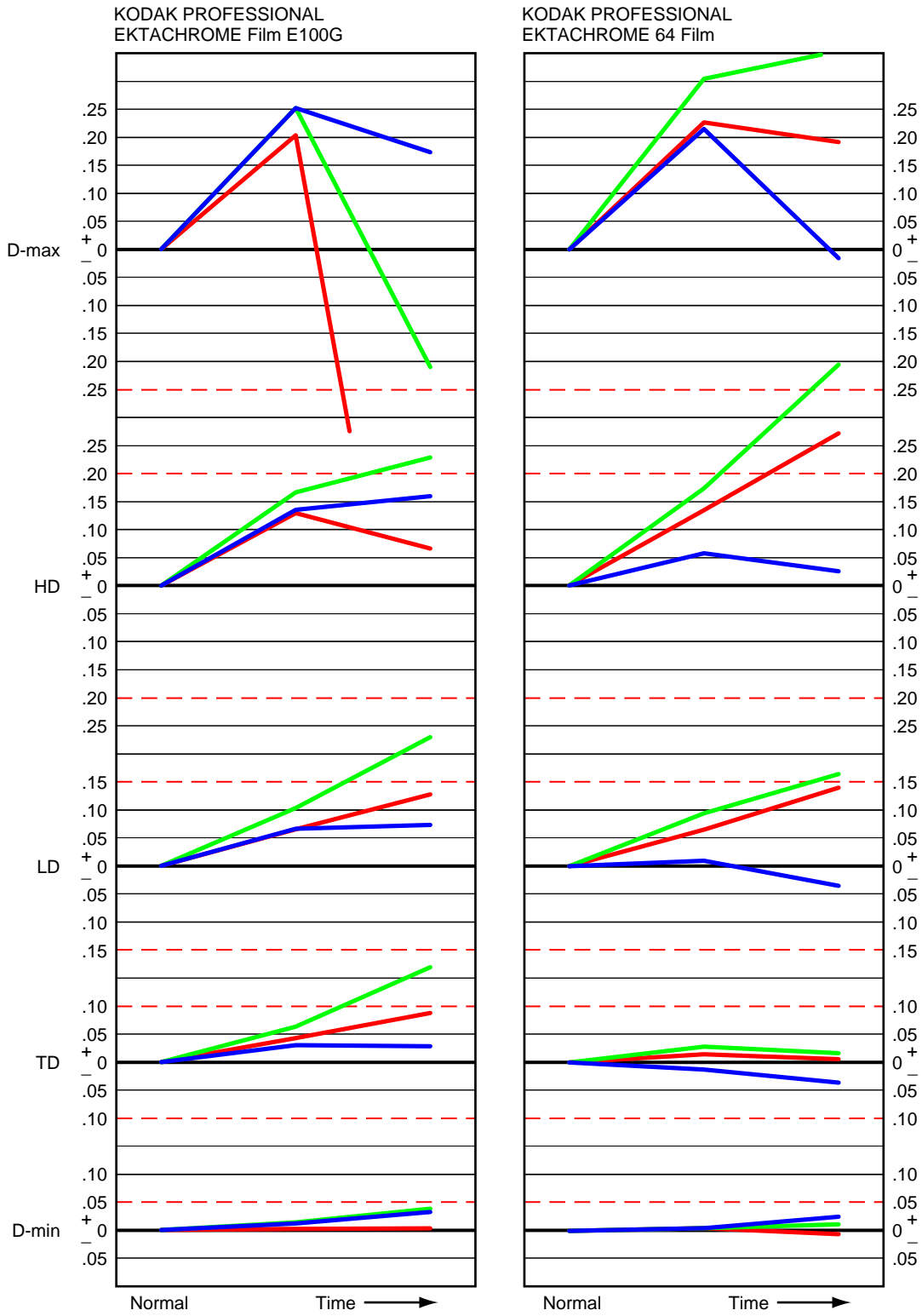
COLOR DEVELOPER—UNDERREPLENISHED (100 mL/sq ft)

Chart 26



COLOR DEVELOPER—OXIDIZED

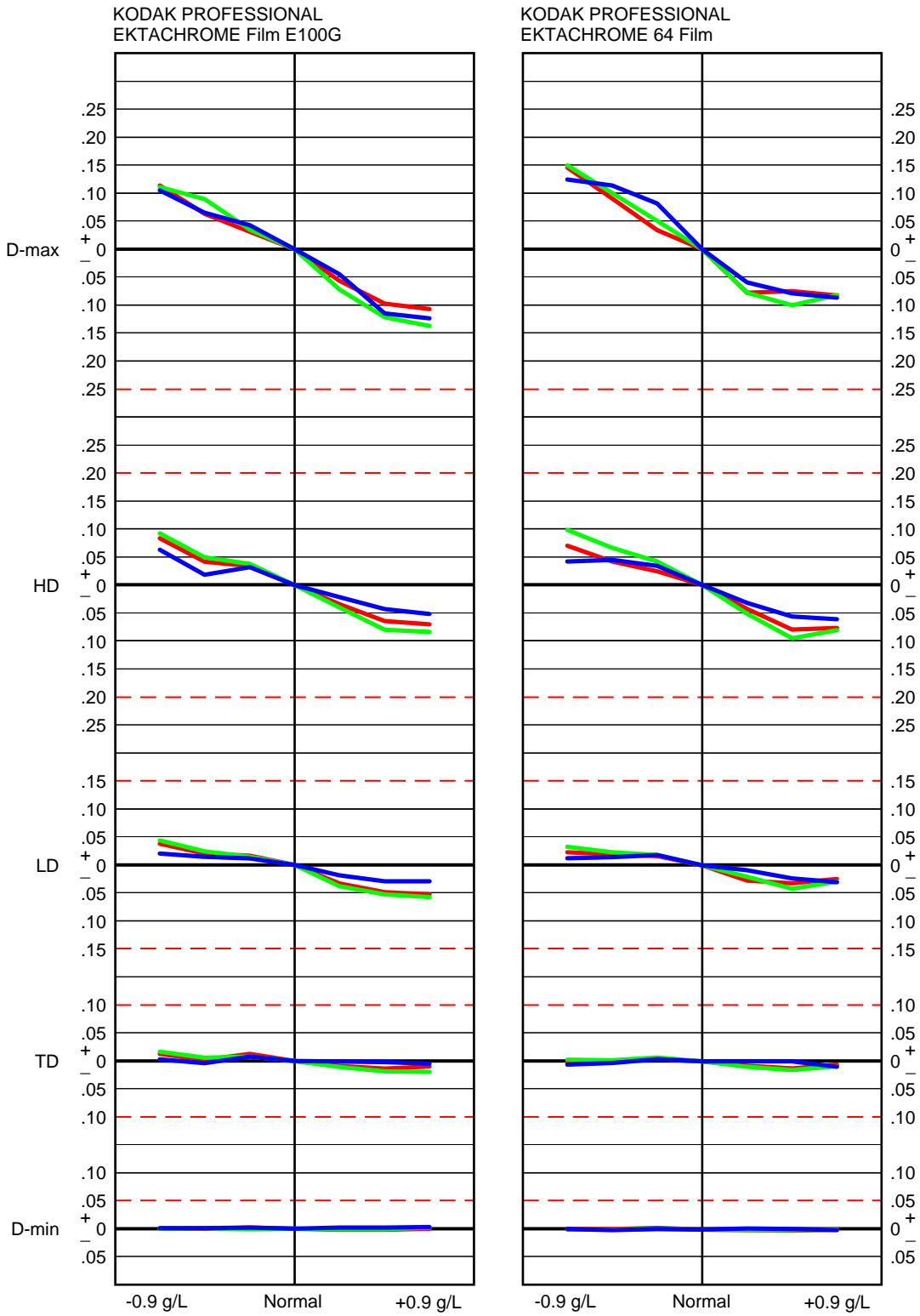
Chart 27



F009_0620EC

COLOR DEVELOPER—SULFITE CONCENTRATION

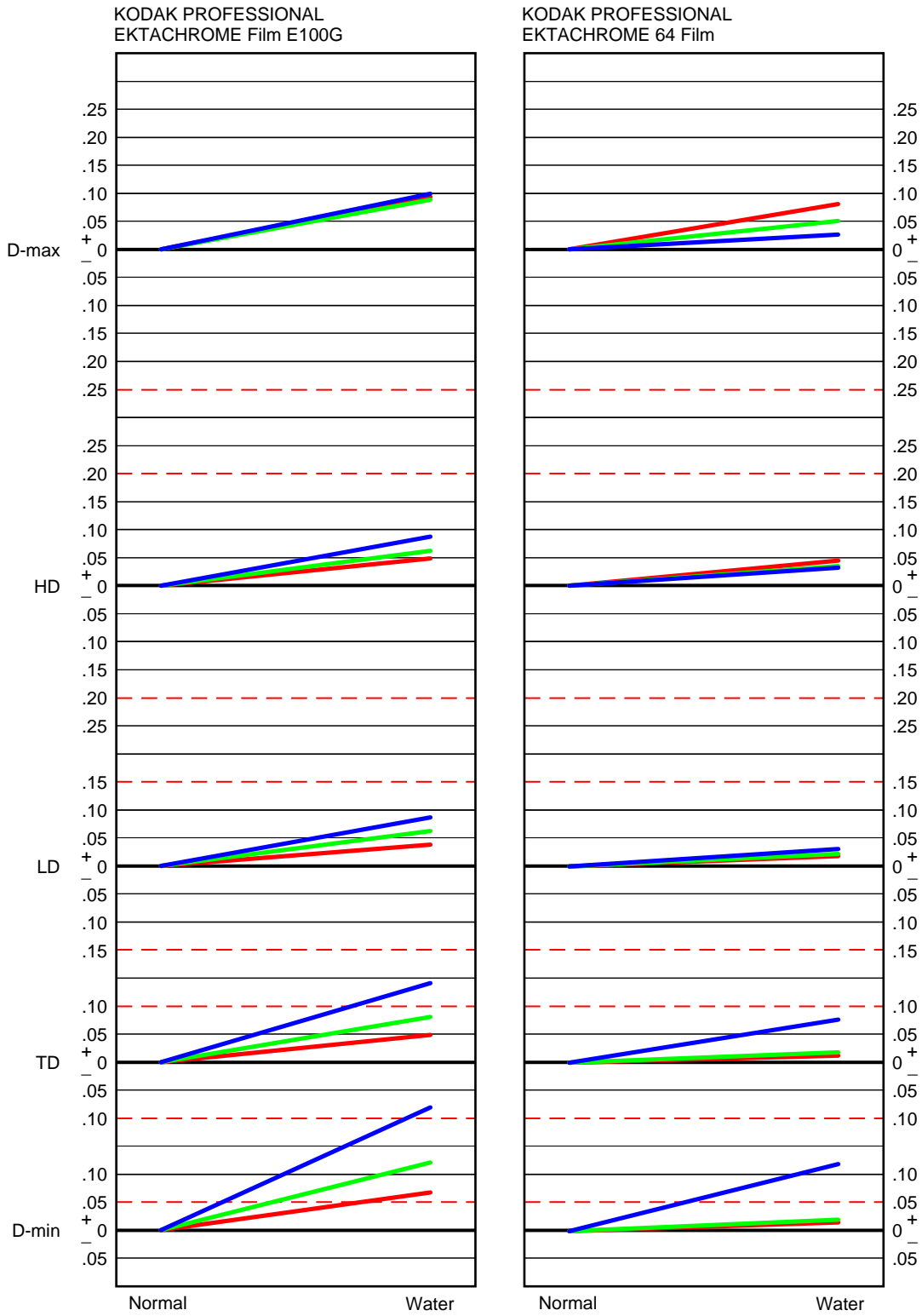
Chart 28



F009_0621EC

PREBLEACH—DILUTION

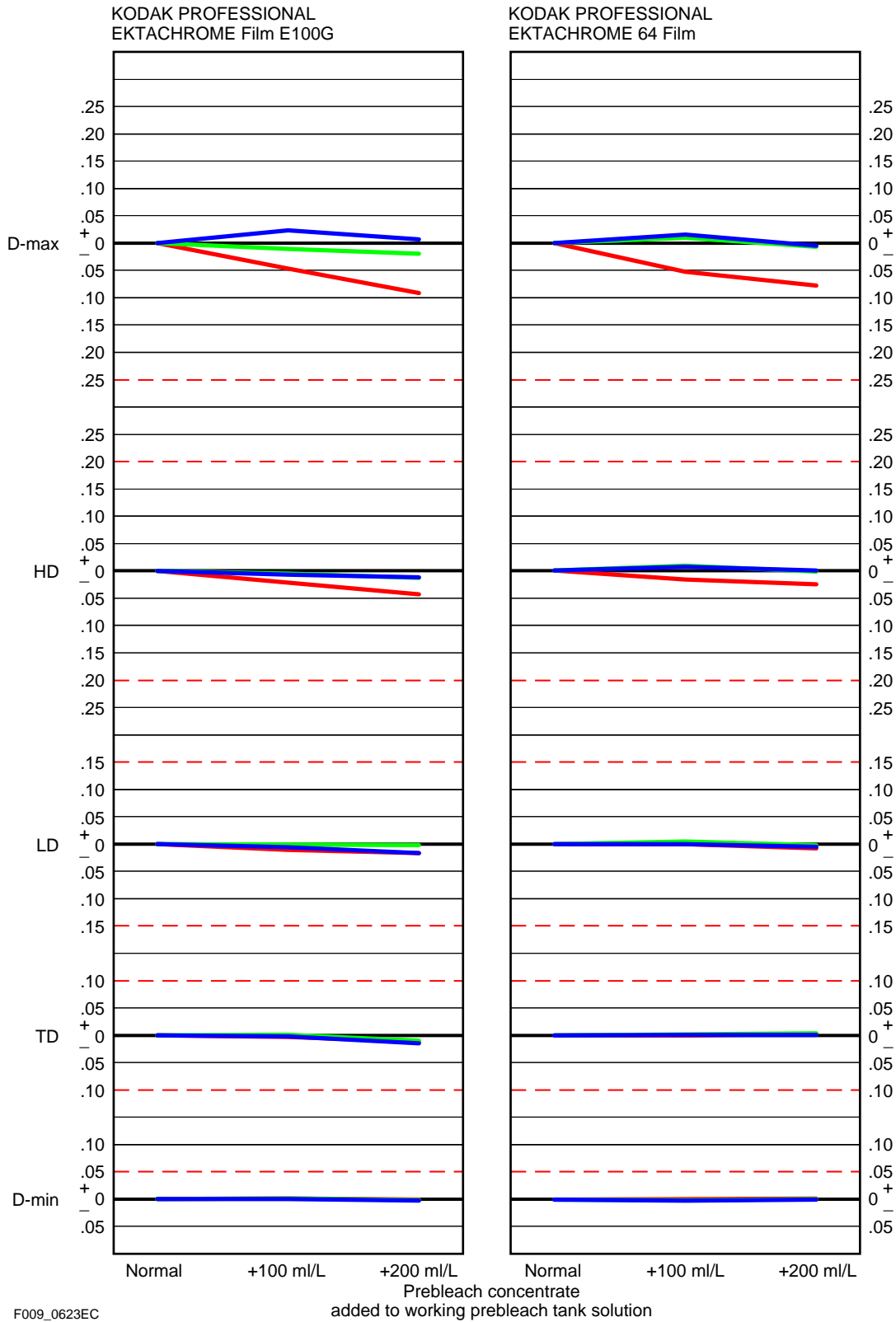
Chart 29



F009_0622EC

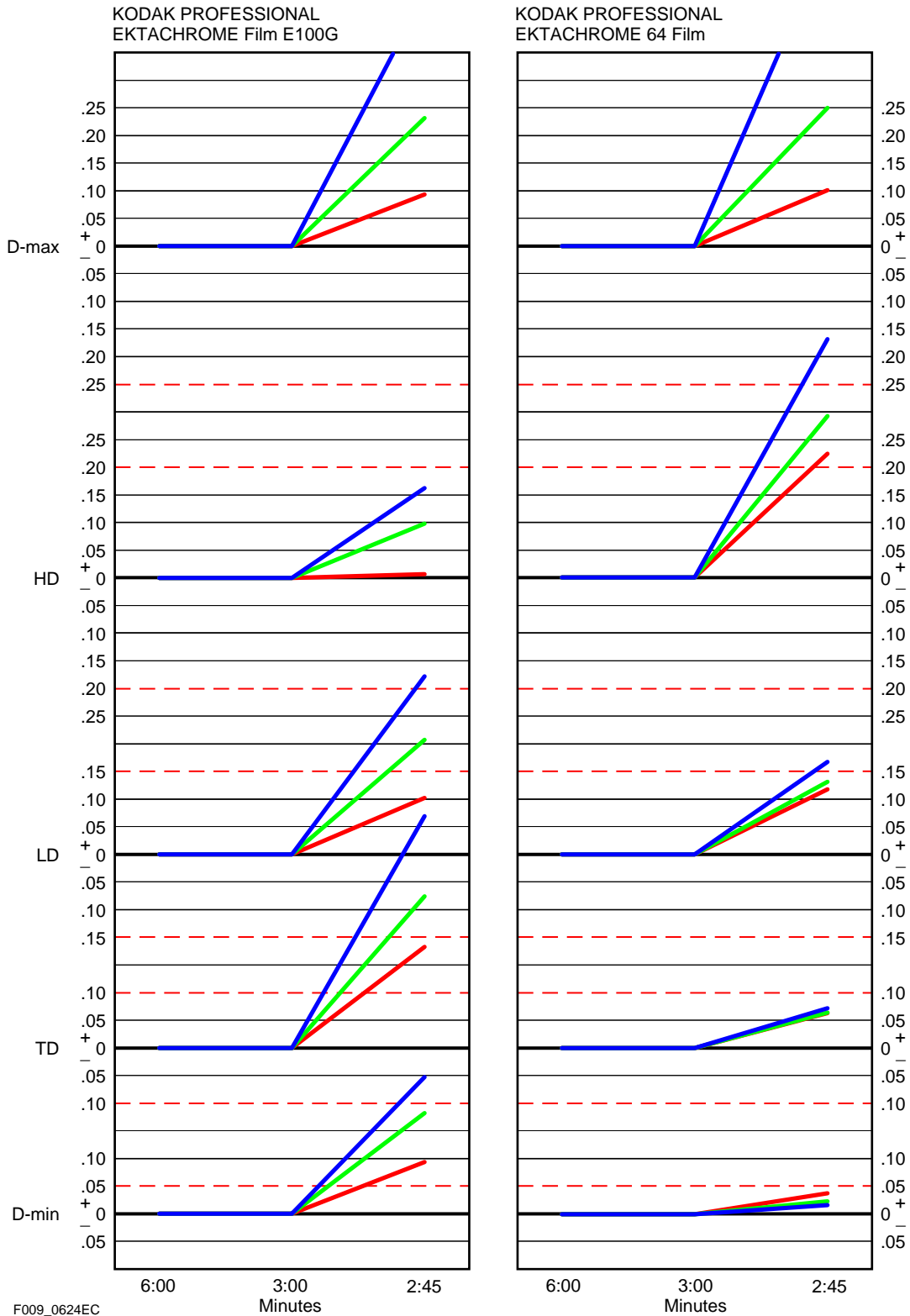
PREBLEACH—CONCENTRATION

Chart 30



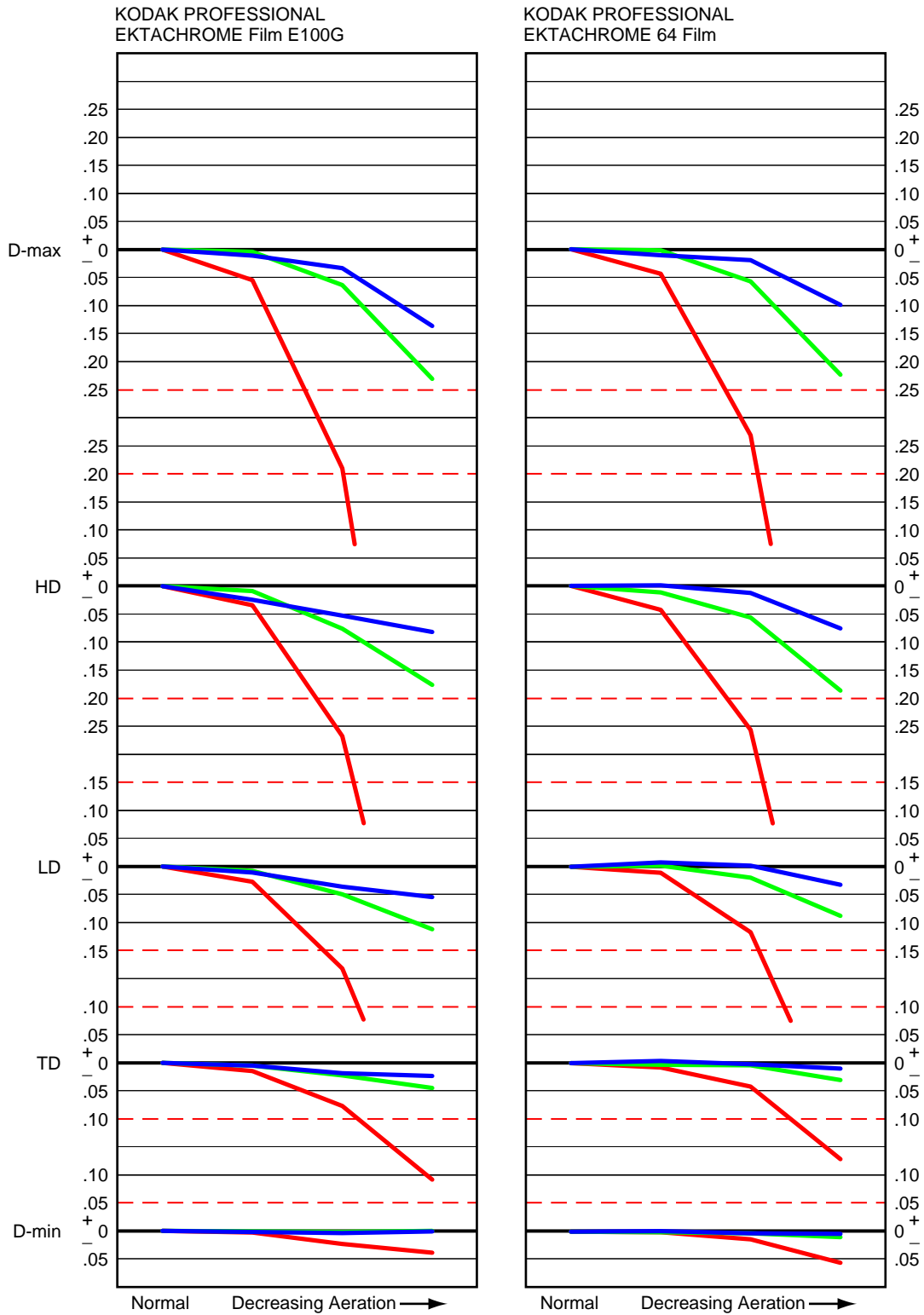
BLEACH TIME—SHORT

Chart 31



BLEACH—AERATION

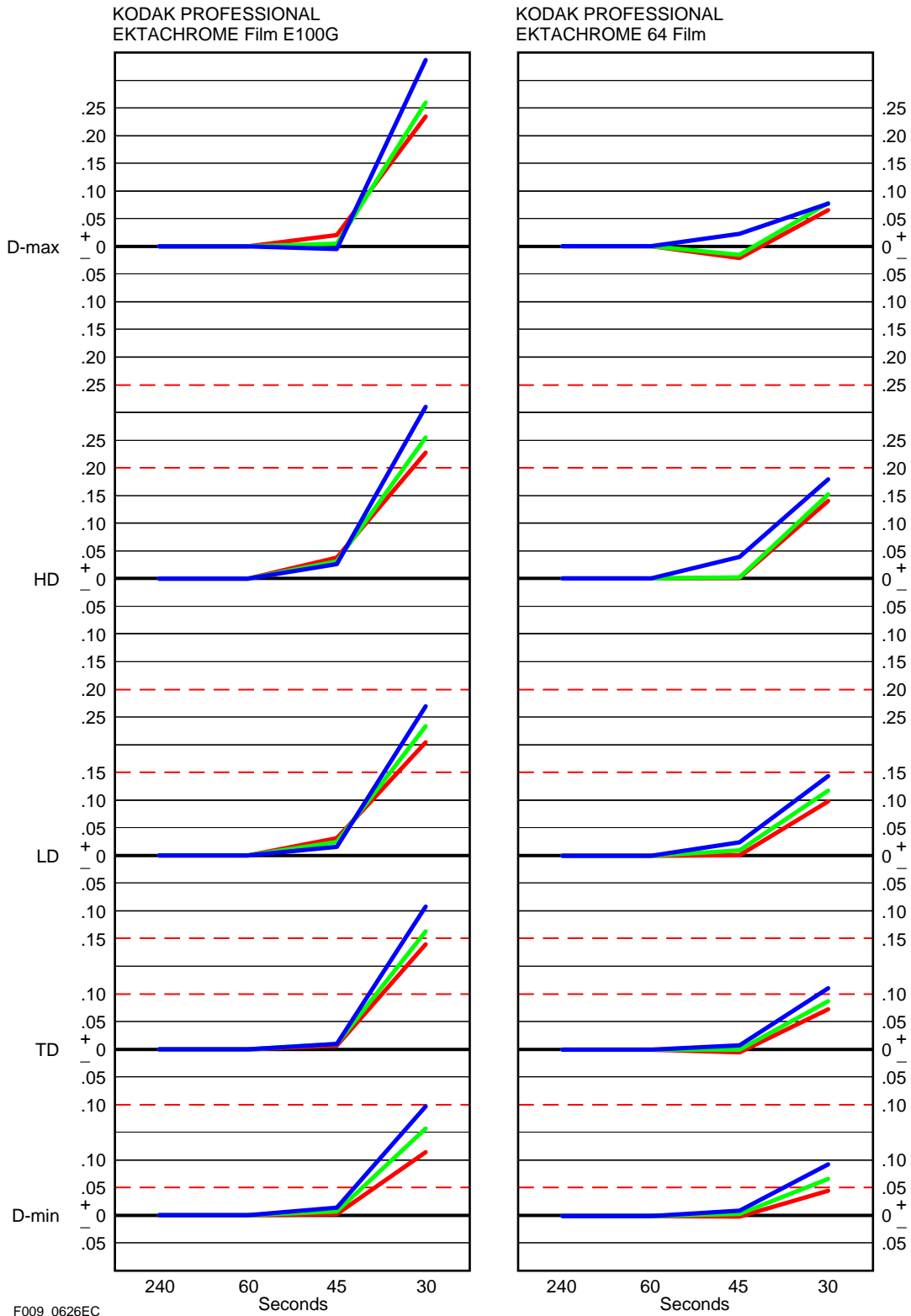
Chart 32



F009_0625EC

FIXER TIME—SHORT

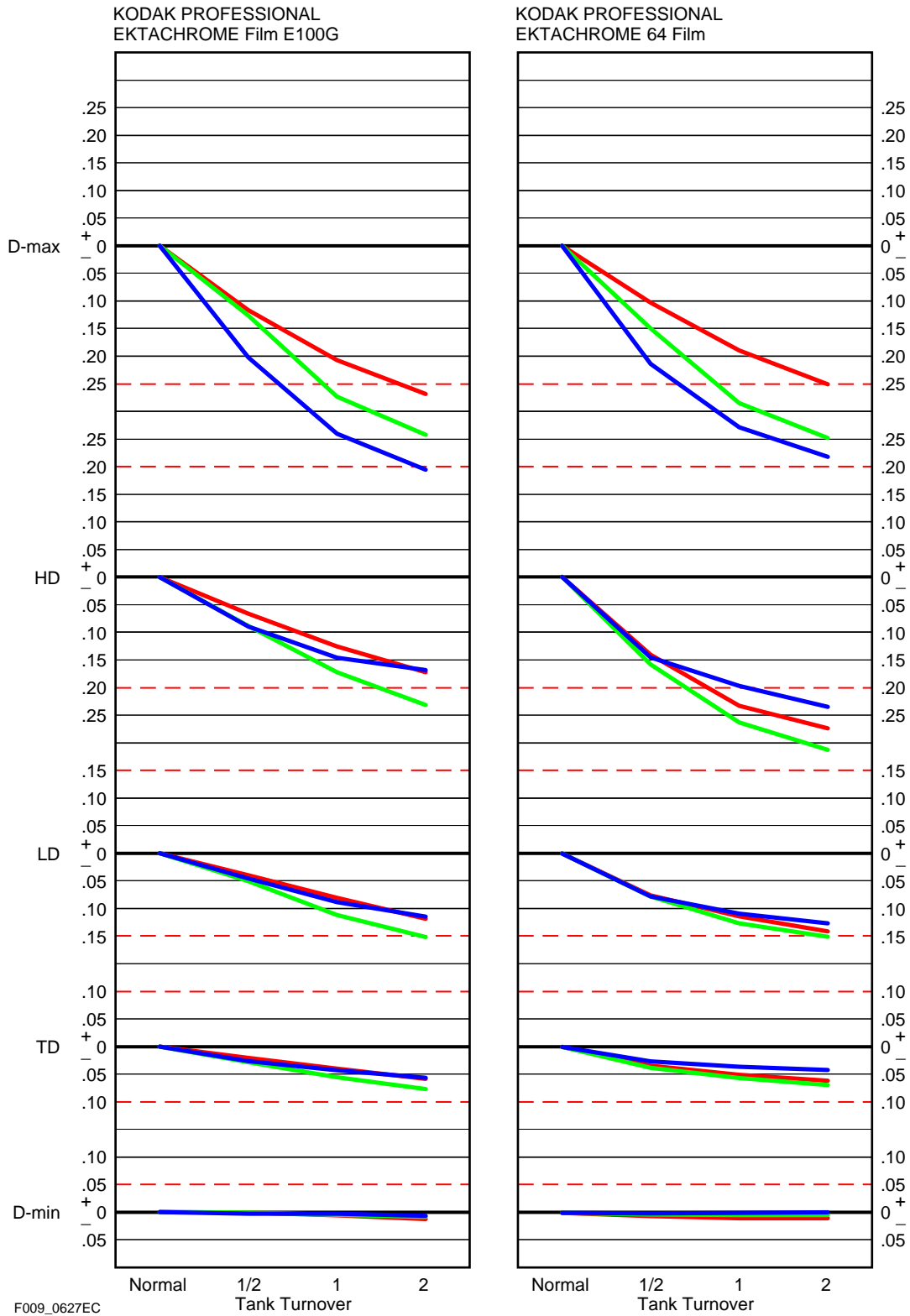
Chart 33



F009_0626EC

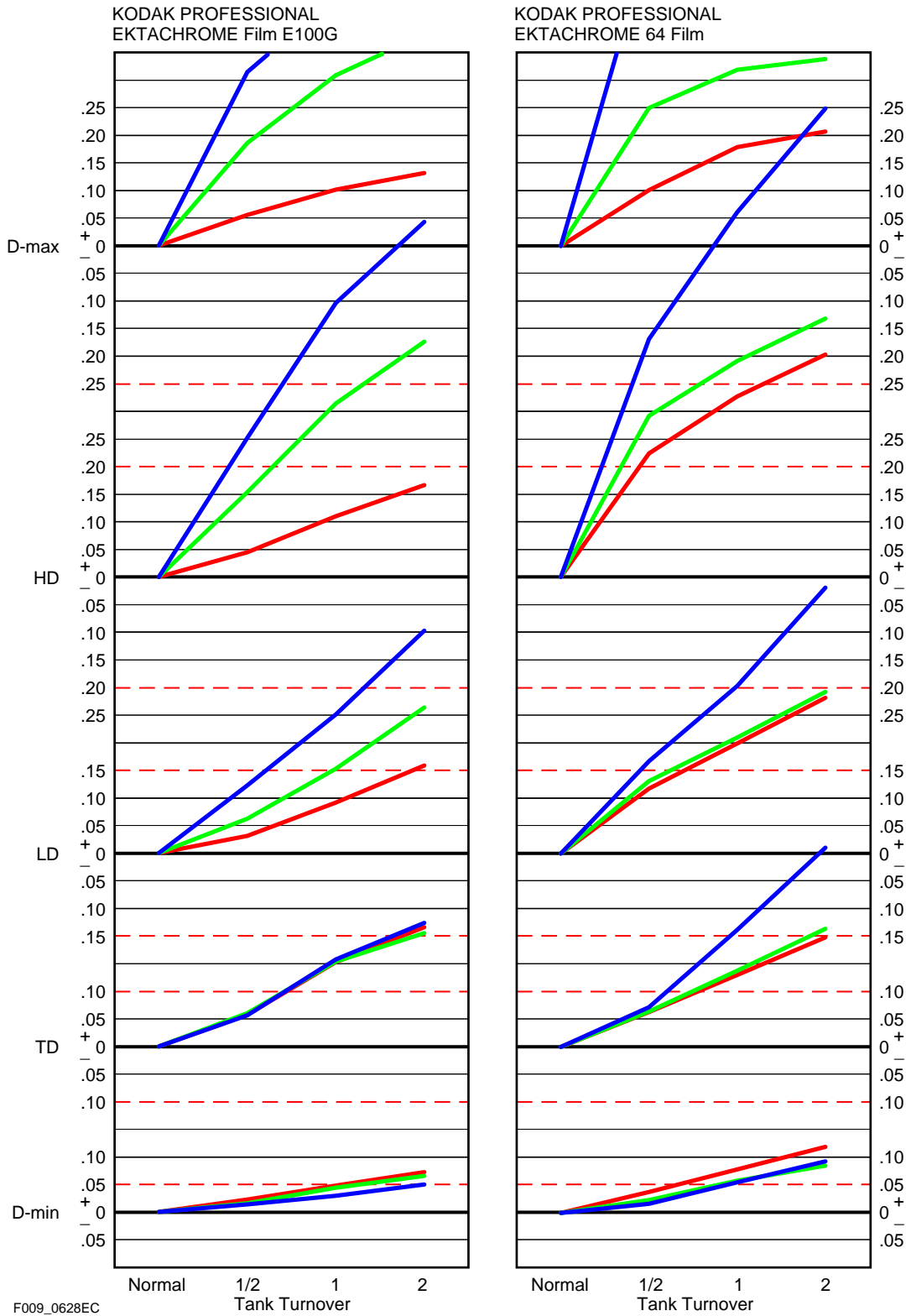
FIRST AND COLOR DEVELOPERS —OVERREPLENISHED BY 2X (400 mL/sq ft)

Chart 34



FIRST AND COLOR DEVELOPERS—UNDERREPLENISHED BY 50%(100 mL/sq ft)

Chart 35



COLOR DEVELOPER—WITH STAGNANT TANK

Chart 36

